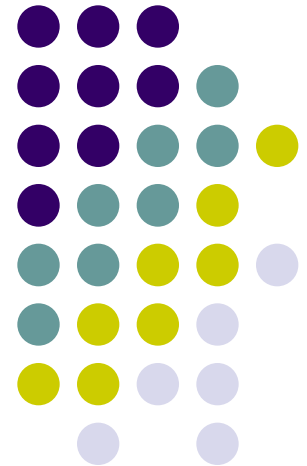
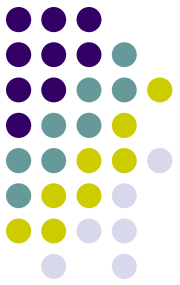


2008 EFCOG Annual Meeting

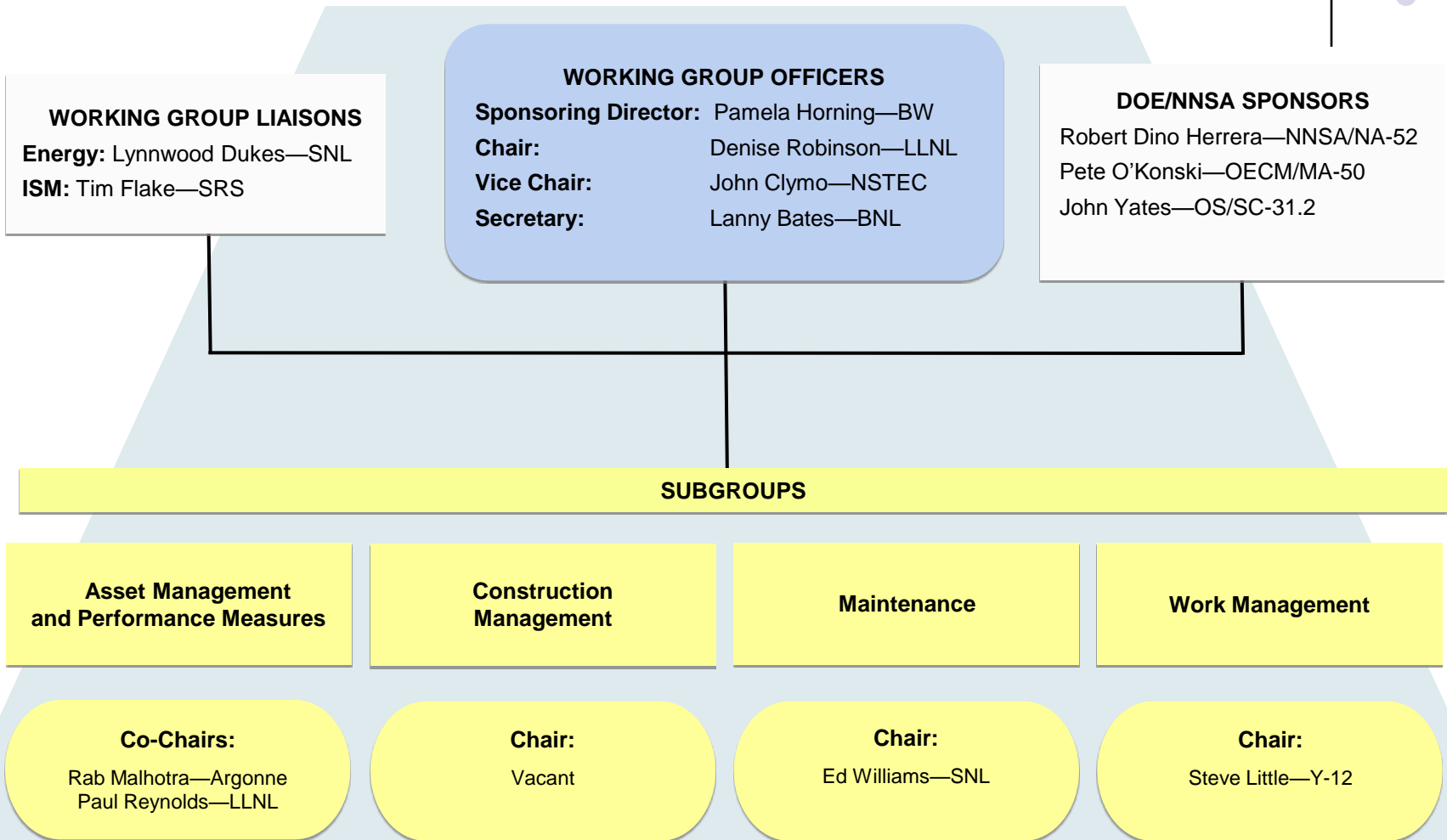


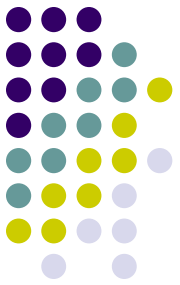
Denise Robinson
Lawrence Livermore National Laboratory
Infrastructure Management Working Group Chair
September 16, 2008





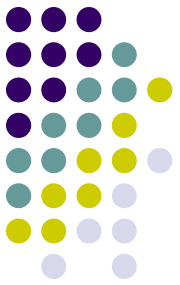
IMWOG Steering Committee





FY2008 Planning/Sharing sessions

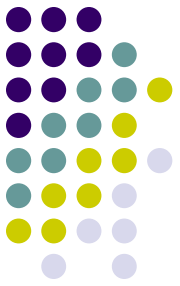
- Our annual meeting was held at the Atomic Testing Museum in Las Vegas, Nevada October 23–25, 2007, hosted by NSTec. Highlights of topics covered were:
 - Executive Order 13423 and Real Property Management
 - NNSA, OECM and Science sponsor briefings on DOE's F&I status in those programs
 - Reliability Centered Maintenance (RCM)
 - DOE Order 433.1 Working Group
 - Work Planning and Control for activity level work
 - President's Management Agenda: Real Property Management
 - Renewable Energy
- Executive Steering Committee meeting at the Nevada offices in July 2008 to develop plans for the coming year.
- Sub-groups held several meetings during the year



FY2008 Accomplishments

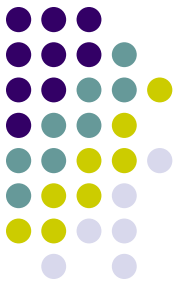
- Partnered with OECM in the development and submission of a white paper on sustainment model best practices
- Continued partnership with EH (Chuck Ramsey) in the DOE Order 433.1 Working Group on nuclear facility maintenance
- Finalized the current alternate finance survey results
- Surveyed RPV calculation methods
- Conducted work management assist visits at SRS and LLNL

Planned Activities Over the Next Year



- Working with the Energy Management Group, propose an approach to sustainability (greening of real property) as required by Executive Order 13423 and DOE 430.2B
- Conduct an evaluation of and beta test the primary sustainment models in use across the DOE Complex
- Develop guidelines for effective space utilization metrics
- Utilizing lessons learned from the site assist visits, write a white paper that will outline best practices identified and the most common challenges found.
- Continue to support the DOE/EH effort with the 433.1 Working Group

Interfaces With Other Working Groups



Established IMWOG liaisons with Energy Management and ISM Working Groups