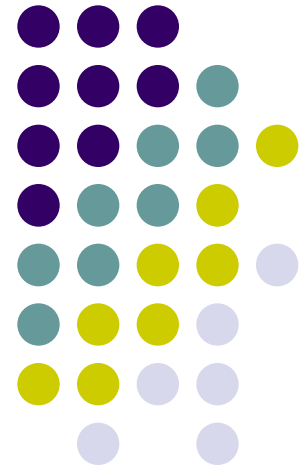
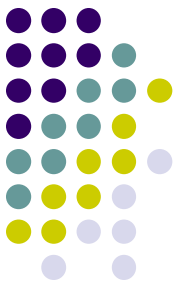


Draft EFCOG Approach for Developing Leading Indicators

Energy Facility Contractors Group
(EFCOG)

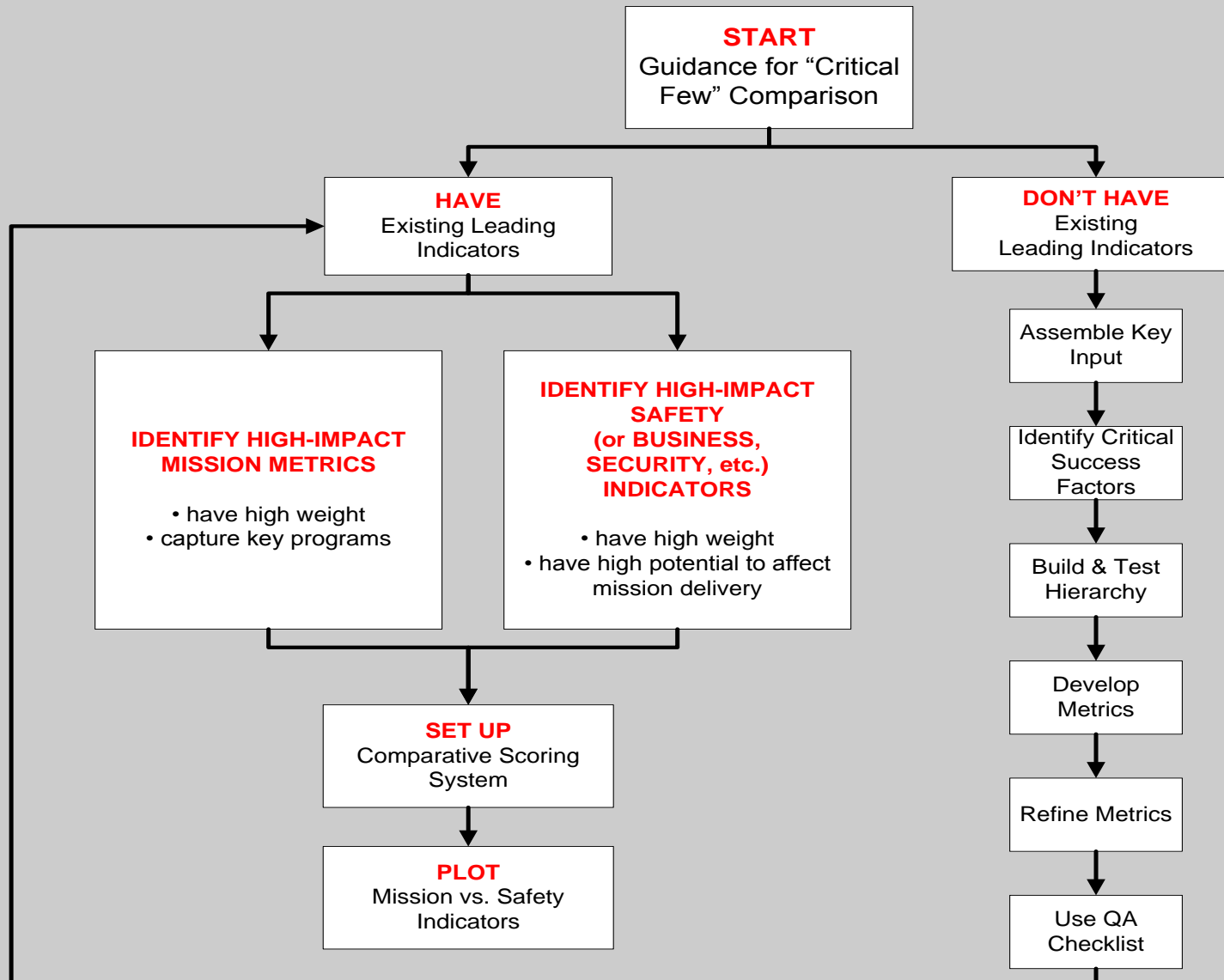
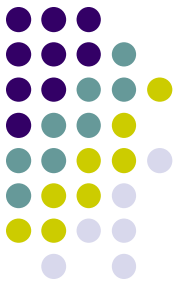




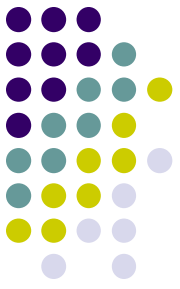
Plan for EFCOG Approach

- Benchmark
 - Collect existing site “leading” indicators through EFCOG
 - Identify common indicators among sites
 - Share lessons learned on “metrics that work . . . and why”
- Develop a Guidance Document/Approach
 - Balance Mission success with Operational excellence (e.g., Safety, Business, etc.)
 - Build key indicators on critical success factors
 - Identify actionable metrics
 - Manage with metrics

Draft Guidance Overview

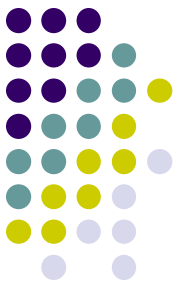


Have Existing Leading Indicators



- Key metrics involving Mission or Program Delivery
- Leading indicators of Safety, Security, or Business with potential to affect Mission delivery
- Generally, these previously developed metrics
 - Have highest relative importance or “weight”
 - Are likely to impact key programs or deliverables
 - Have predictive capability

Don't Have Existing Leading Indicators



Metric Development Process

- 1) Assemble key input (goals, deliverables, milestones, etc.)
- 2) Identify and prioritize critical success factors
- 3) Build metric hierarchy
- 4) Develop metric characteristics (targets, ranges, etc.)
- 5) Refine measures (predictive, actionable)
- 6) Use quality checklist



It's only 6 steps!!!

Quality Checklist



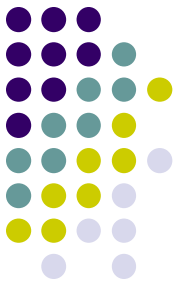
Does the metrics structure . . .

- Translate mission into actionable measures?*
- Show where and how to improve performance (process)?*
- Capture and measure known “weak” areas?*
- Track what internal and external customers care about?*
- Provide leverage in changing behavior or process criteria?*
- Assist in holding people accountable?*
- Help manage cross-functional processes?*
- Provide benchmarks to evaluate or compare performance?*
- Help build your capabilities for the future?*



A hierarchy that does not have a high percentage of “yes” answers should be revised

The Big Question



***Am I using these
metrics to manage?***

- ***If yes, keep them***
- ***If no, modify or eliminate***