



**Savannah River**  
Nuclear Solutions, LLC  
*A Fluor Daniel Partnership*

# **SRS Work Management Function RPAM / Work Planning & Control**

---

**Tim Flake**

February 2009

Occasion: Overview for DOE-SR

---

Location: 703-H, Room 72

# Work Management Background

DNFSB 2004-1 – ISM Revitalization an issue across DOE Complex

07/04 – 11/05 – HQ / DNFSB / Contractor team developed Complex Wide commitment / response

11/05 – 3/06 DOE-HQ (Rispoli) / NNSA-HQ (D'Agostino) direction regarding completion of Site reviews and submittal of Site action plans to HQ.

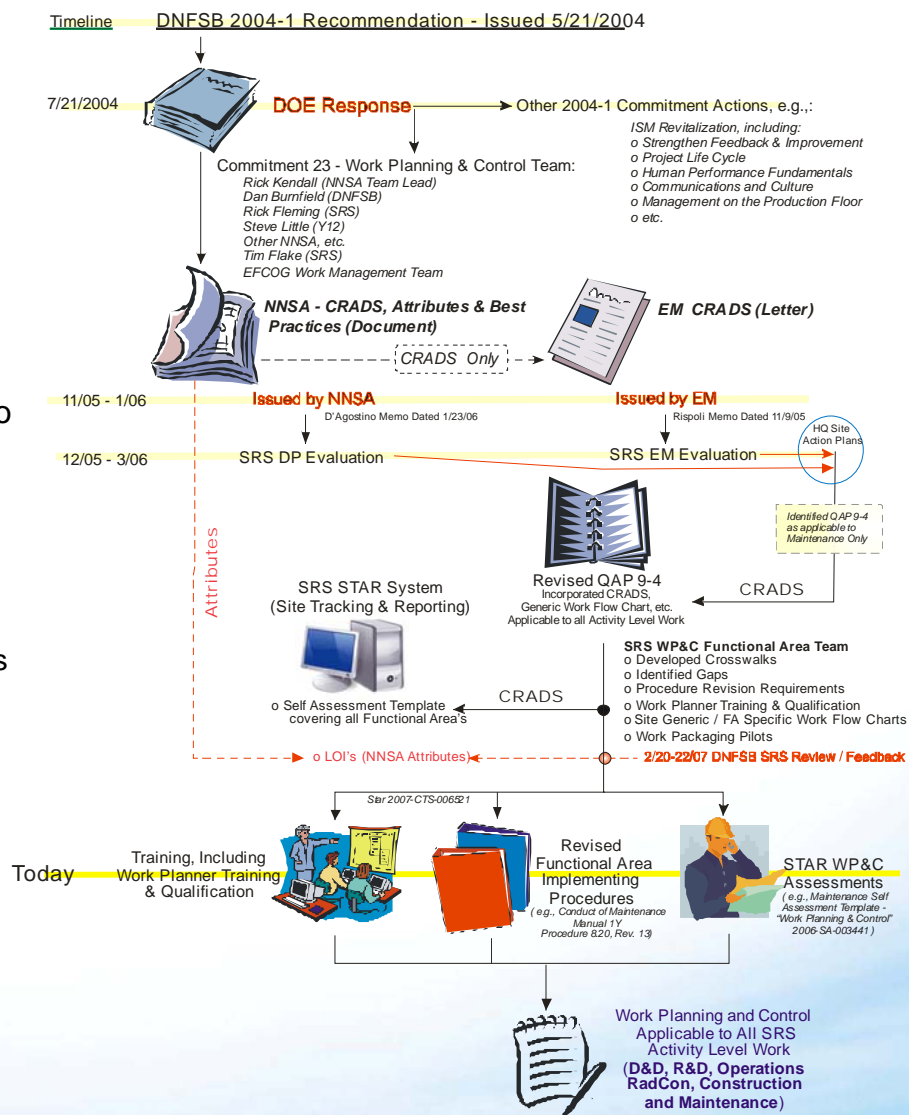
03/06 - WP&C Team Formed

- QAP 9-4 Applicable to all Activity Level Work
- Functional Area Crosswalks identified gaps
- Procedure Revisions
- Work Planner Training & Qualification
- Site Generic (QAP 9-4) FA specific work flows
- STAR WP&C Self Assessment Template

02/07 – DNFSB SRS Review

09/09 – M&O Transition Complete – Work Management named a “Function”.

## SRS Work Planning & Control (WP&C)



# Work Management Objective & Scope

Functionally align SRS Work Management processes and programs so that “work planning” is consistent (to the extent practical) across all Functional areas performing “activity level work”.

Note: Formal Work Management Function Description approved by M&O on 2/6/09

The Work Management scope includes the work planning and control associated with activity level work being performed within the Functional Areas of:

- Operations,
- Radiological Controls,
- Construction,
- R&D,
- D&D
- Maintenance

The intent of the Work Management process is to evolve from programs and processes which are semi independent, to a program which provides Site Work Planning & Control across all functions having activity level work, thus effecting maximum utilization of programs, processes, procedures and personnel.

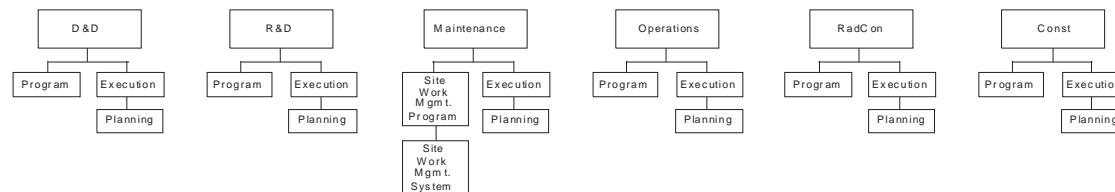
# Work Management Goal

Provide a comprehensive Work Management Process that provides a safe, efficient and cost effective program ensuring that ISM is delivered and integral to all "activity level work" being performed at SRS.

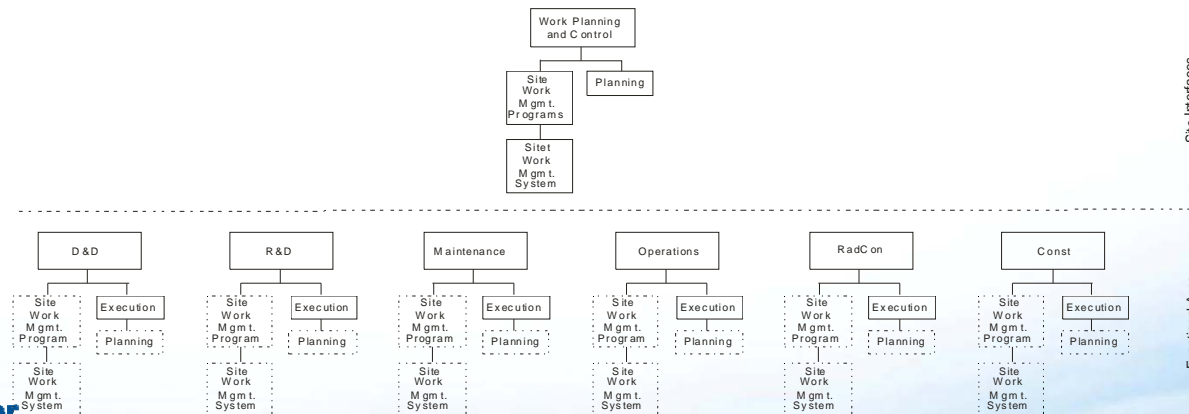
Continue to set a positive example for the DOE Complex and with other DOE Sites, DOE / NNSA - HQ, EFCOG and the DNFSB, etc., to continually improve the program, establish and share best practices and support other Sites expressing interest in learning from SRS practices to improve their Site Work Management Processes.

## SRS Work Management Goal

Start = 6 Independent (Stovepiped) Programs Perform Site Activity Level Work



SRNS Goal - Convert 6 Vertical Programs to a Single Horizontal Site Program



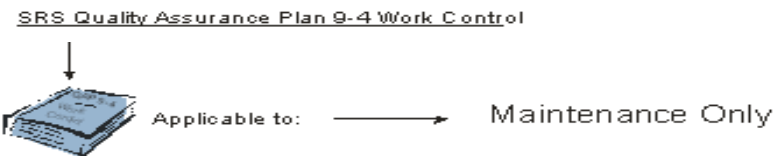
# Work Management Implementation Approach

The approach is to align the various Site elements into a functional having responsibility for Site Work Planning & Control:

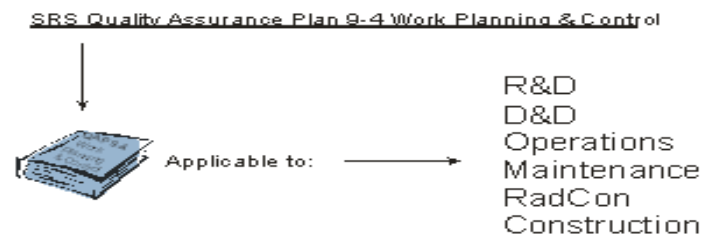
Functional Area Programmatic Requirements and Criteria are outlined in Manual 1Q, QAP 9-4, which was revised to effect the change depicted by the following sketch (action complete):

## **Savannah River Site Evolution of Work Control Requirements**

Previous:



Current:



# Work Management Organization

Establish Work Management / Work Planning and Control Functional Organization (D4800), based on the following work assignment positions:

Positions performing WP&C Functions	Map to Function
Work Control/Work Center Manager	Map to WP&C
Lead Planner	Map to WP&C
Planner	Map to WP&C
Safety guards & Security Work Planner	Map to WP&C
Fire Protection Work Planner	Map to WP&C
Construction/CDE Planner	Map to WP&C
Maintenance Procedure Writer	Map to WP&C
Discipline Scheduler	Map to WP&C
Work Window Manager	Map to WP&C
WMC (SPOC)	Map to WP&C
Work Center Document Control	Map to Operations
Maint Spares Part Coord	Map to Operations
IP/EM/ME/MS/IE Coord	Map to Operations
Maint & Infrastructure Programs	Map to WP&C
Facility Maint Programs	Map to WP&C
WI Mgmt. Program Computer Support	Map to WP&C
Tasklist Writer	Map to Operations
STEs	Map to Execution
Maintenance (Mech& ELM)	Map to Execution
Maintenance Managers	Map to Execution
Reviewers/Approvers <ul style="list-style-type: none"> <li>- Operations</li> <li>- Engineering</li> <li>- RadCon Work Planners</li> <li>- Industrial Hygiene</li> <li>- Industrial Safety</li> <li>- Quality</li> <li>- Maintenance</li> </ul>	Map to Execution / Applicable Function
Work Management (Maintenance) Program	Map to Work Management
Work Management Reporting (P&I)	Map to Work Management
IT Support of Asset Units	Map to WP&C (align with Financial Ctg.)
POD / POW Schedulers	Map to D2000, Project Control

# Work Management Interface Responsibilities

Interface with all Functional Areas (Operations, R&D, D&D, Construction, Maintenance and RadCon) having “activity level work” to determine and implement the appropriate work planning & control processes and personnel functional alignment

The Work Management function will be responsible for the following personnel related actions:

- Staffing, job assignment and reassignment
- Technical direction – including interpretive authority
- Training and Qualification
- CAP & RP3, including Annual Salary Planning
- Promotion and job progression
- Personnel Issues, Discipline, etc.
- Coordination and communication with the work execution group / Manager to which the individual is assigned, regarding all of the above.