



EFCOG ISM Working Group

**Integrated Safety Management
Program Manager Sub-Group**

**Dr. Patricia R. Worthington Director
Office of Health and Safety**

November 1, 2006



Key Priorities and Initiatives of the New Organization



- § Build Stronger Relationships Between Workers, Unions, Programs and Field Managers, and Other Organizations**
- § Assist in Identifying, Resolving, and Preventing Issues and Recurrence of Incidents**
- § Strengthen ISM**
- § Increase Focus on Worker Safety and Health**



Next Steps



§ I Also Look Forward to Working With You to Identify and Implement Improvements in ISM



Key Priorities and Initiatives of the New Organization



- § **Promote Integrated Management**
- § **Improve Interface Between Safety and Security**



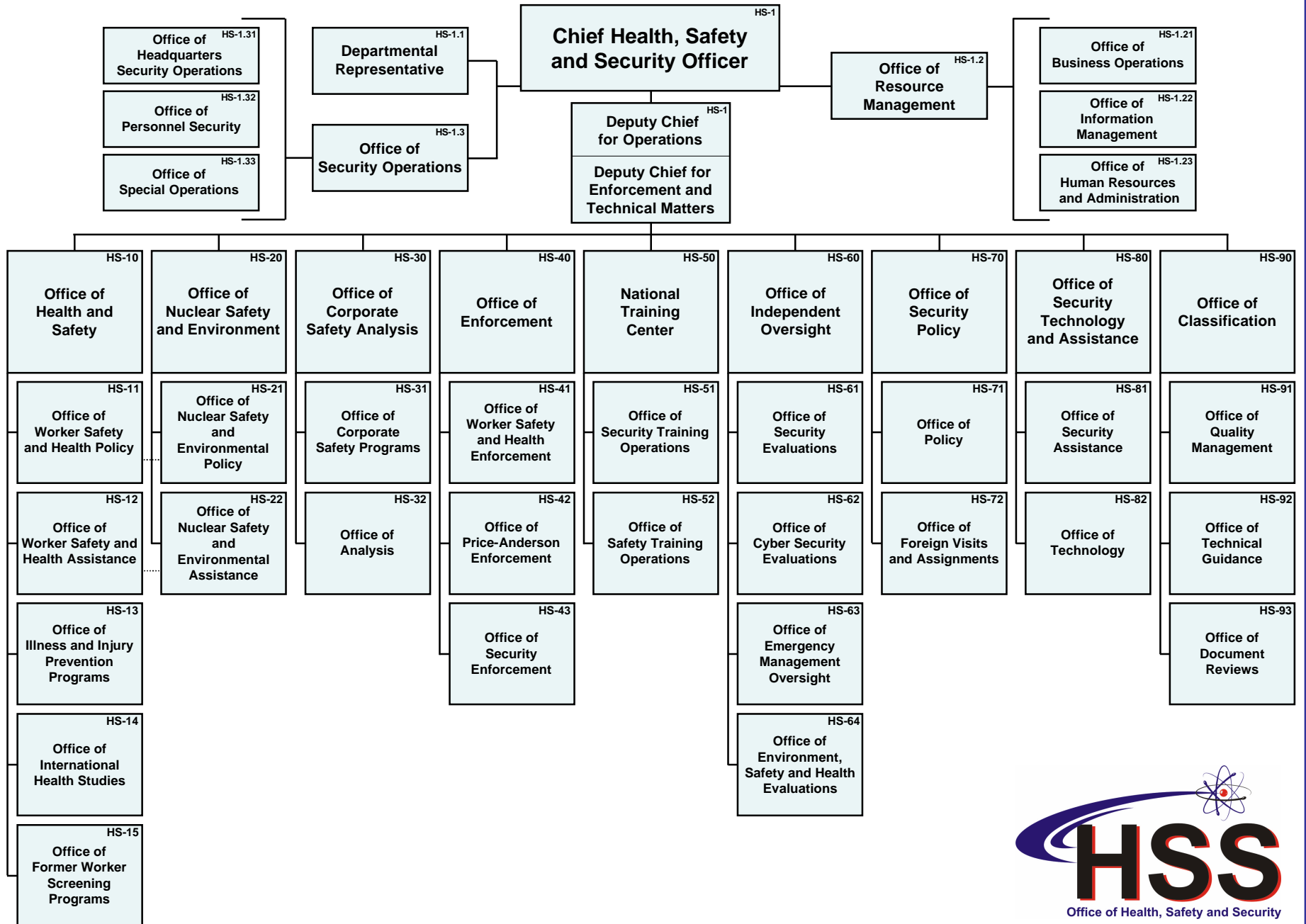
Current Status of DOE P and O 226.1A



- § August - September 2006 -- working group addressed changes to 226.1 based on direction from the Deputy Secretary**
- § October 2, 2006 -- a proposed revision to DOE P and O 226.1A was submitted to the DOE Office of Management (MA)**
- § October 19, 2006 -- DOE P and O 226.1A was sent to the newly established Advisory Group to review justification and to endorse submission to RevCom**
- § November 1, 2006 -- Decision of the Advisory Group pending**

Office of Health, Safety and Security

10-20-06



Office of Health, Safety and Security

10-20-06

