

The Idaho National Laboratory

Elizabeth Sellers

**Manager, Idaho Operations Office
U.S. Department of Energy**

May 22, 2007



Idaho Operations Office

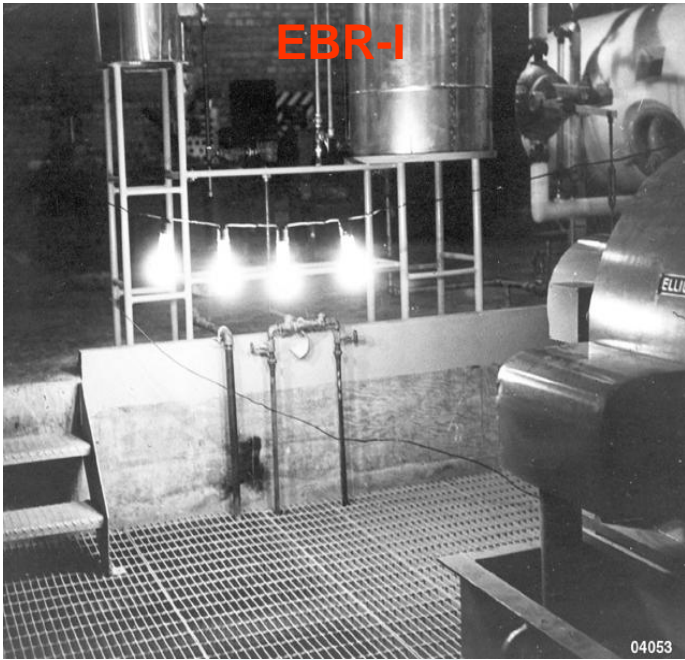


Idaho Operations Office

C1422-16

Our History

EBR-I



04053

S1W



MTR



55-0971

BORAX III



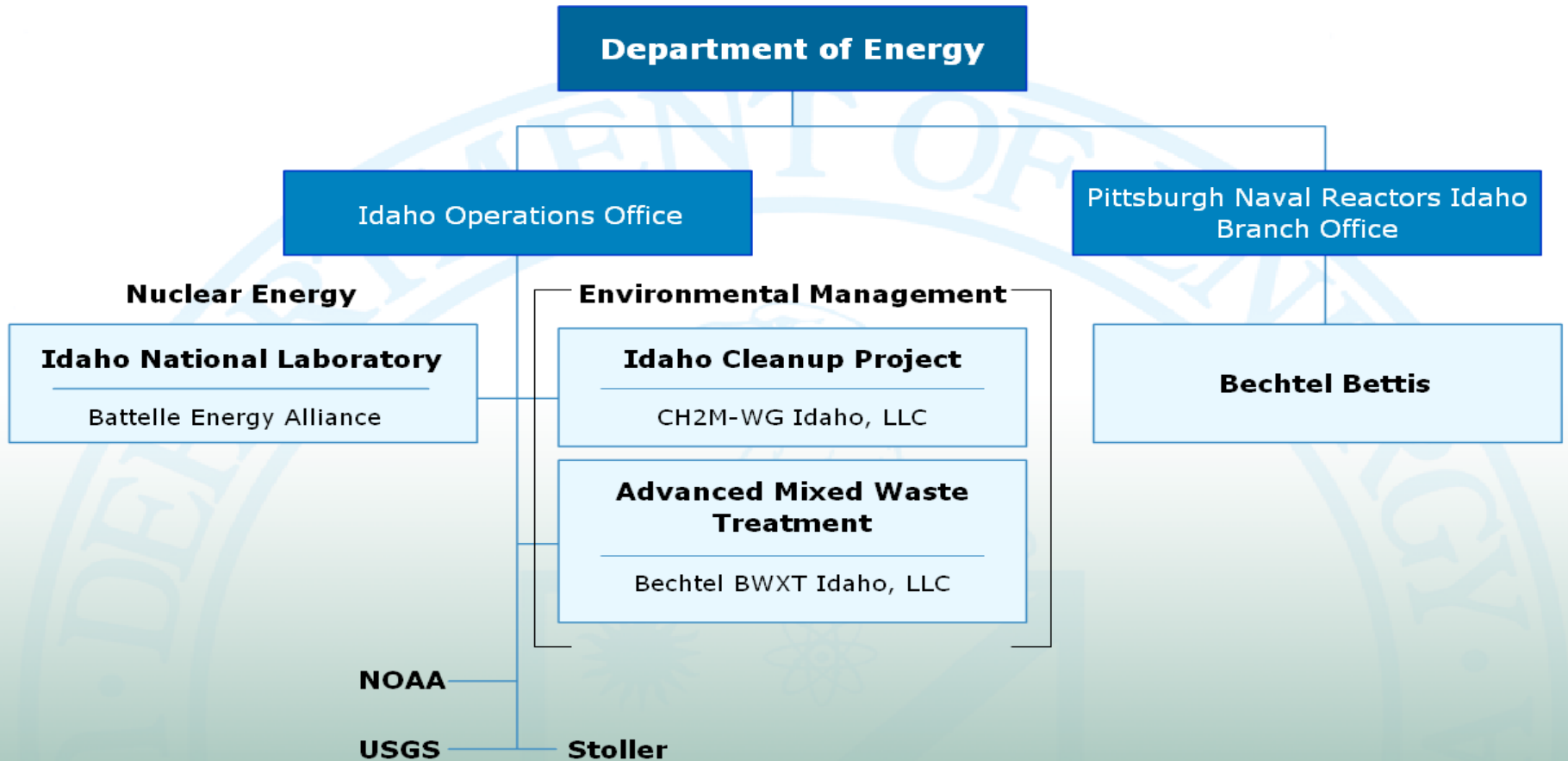
The New INL

- Secretary of Energy Designated the INL Lead Lab for Nuclear Energy Development
- Combined Two National Laboratories - INEEL and ANL-W
- We Are Here to Perform a Mission - Energy Security

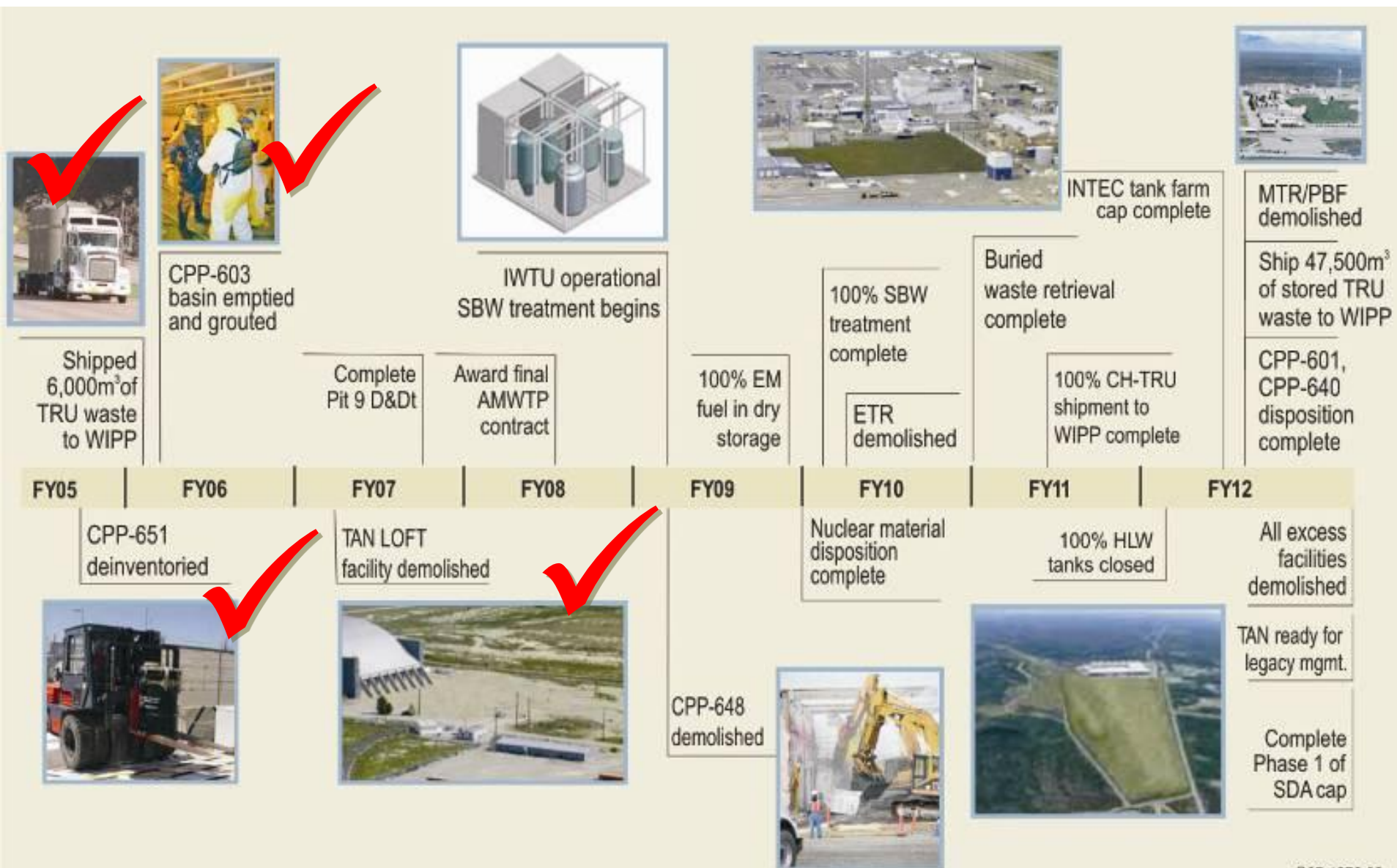


Organizational Structure

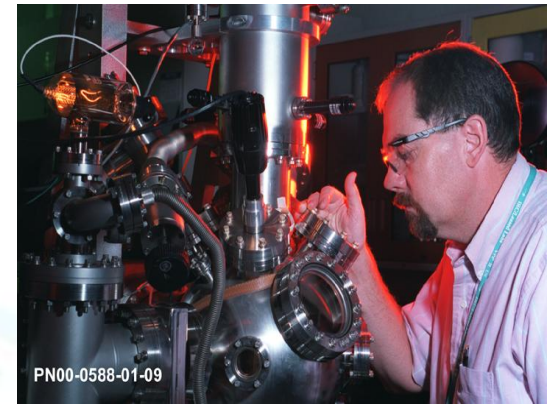
- Three Major Contracts



EM Key Activities/Completion Dates

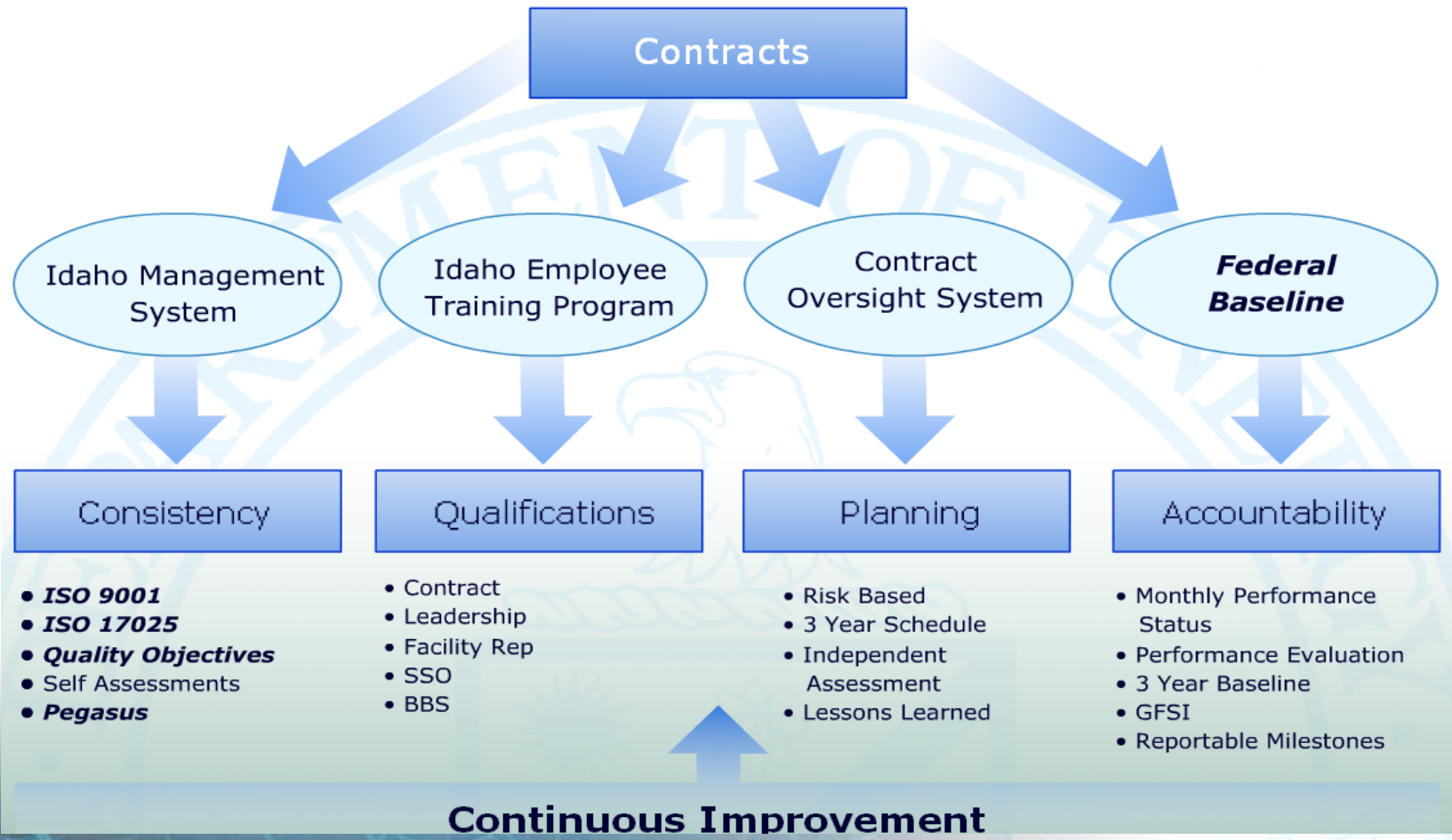


INL Multi-Program Laboratory



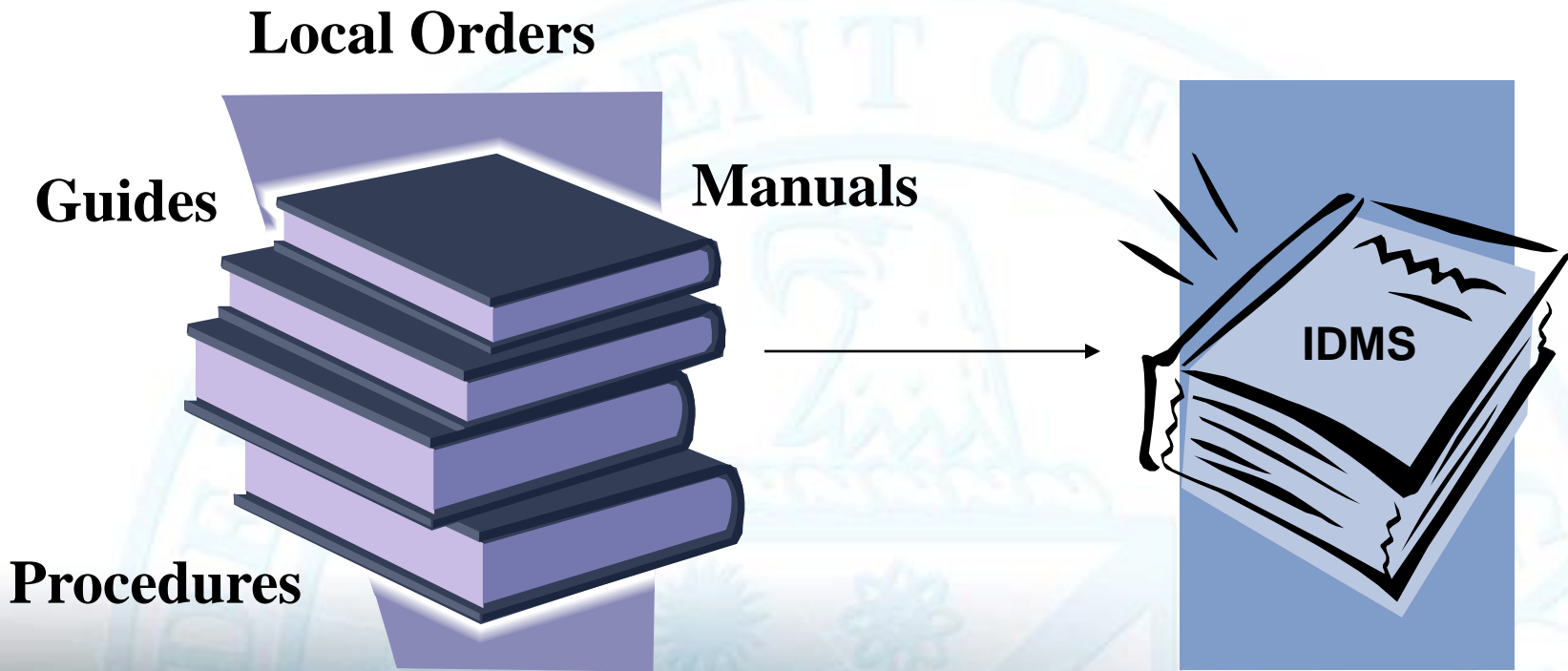
Idaho Operations Office

Safe Mission Accomplishment



Idaho Management System

- Streamline Processes and Procedures



- **Process Improvement**

Commissioned 5 experts in the nuclear field to perform a review of the contractor's implementation of safety basis requirements in context of current Department policies and guidance.



Challenges

- Significant NE challenge on future of nuclear energy
- Significant EM challenge to eliminate risk and clean up legacy waste
- Significant DOE-ID challenge to balance contract success with accountable oversight

