

Safety Basis Assumptions and Implementation

David Satterwhite – LANL

Panel Participant

Historic issues of safety basis development and implementation issues are being addressed through centralization of safety basis resources and integration with engineering processes under a single design authority.

Slide 1

Safety Basis Assumptions
and
Implementation

Assessments

- A Los Alamos National Security Team Readiness Report documented the following issues with the Los Alamos National Laboratory DSA program:
 - The required format and content of DOE STD-3009 is not followed and clear linkage between the accident analysis in the DSA and the controls defined in the TSRs is lacking.
 - The current Safety Basis for most facilities is made up of numerous documents such as basis for Interim Operations (BIO), Process Hazards Analysis, Interim Technical Safety Requirements (ITSR), DOE letters, Safety Evaluation Reports (SERs), Conditions of Approval and Implementation Plans. This is further complicated by the fact that there is no Configuration Managed Safety Basis List for each facility.

Assessments, cont.

- TSR Assessment Team concluded that many of the difficulties regarding implementation of TSR controls stem from the following practices:
 - Some facilities do not develop or maintain a TSR Implementation Plan per the Laboratory Implementation Requirement, which list each control, and describe how that control is implemented.
 - Some facilities do not assess implementation of safety management programs required by TSR Administrative Controls at their facilities.
 - LANL does not disposition, track or implement Conditions of Approval into the TSR implementation plan.
 - Documented Safety Analysis documents are outdated.

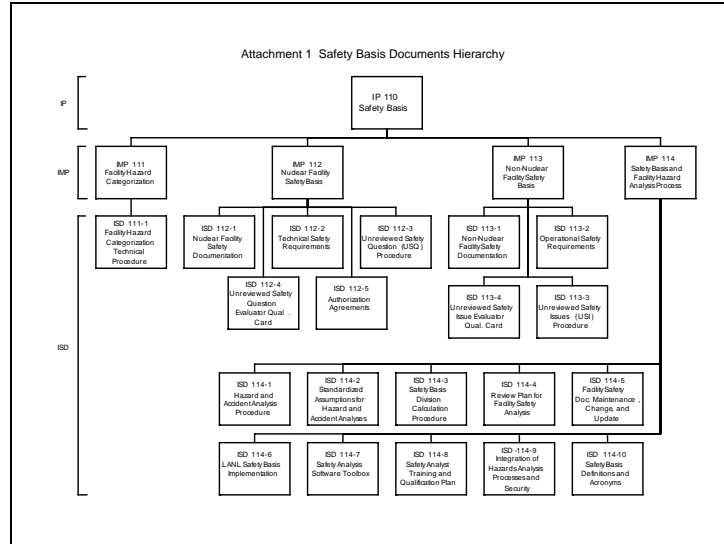
Assessments cont.

- 2005 Office of Independent Oversight:
 - Design/analysis mismatches
 - Improper implementation of USQ procedure

Solutions

- Centralization
- Assumptions manual (SARAH like)
- New policy and procedures manual
- Integration of safety basis and engineering

Slide 6



Slide 7

