

Criticality Safety Update

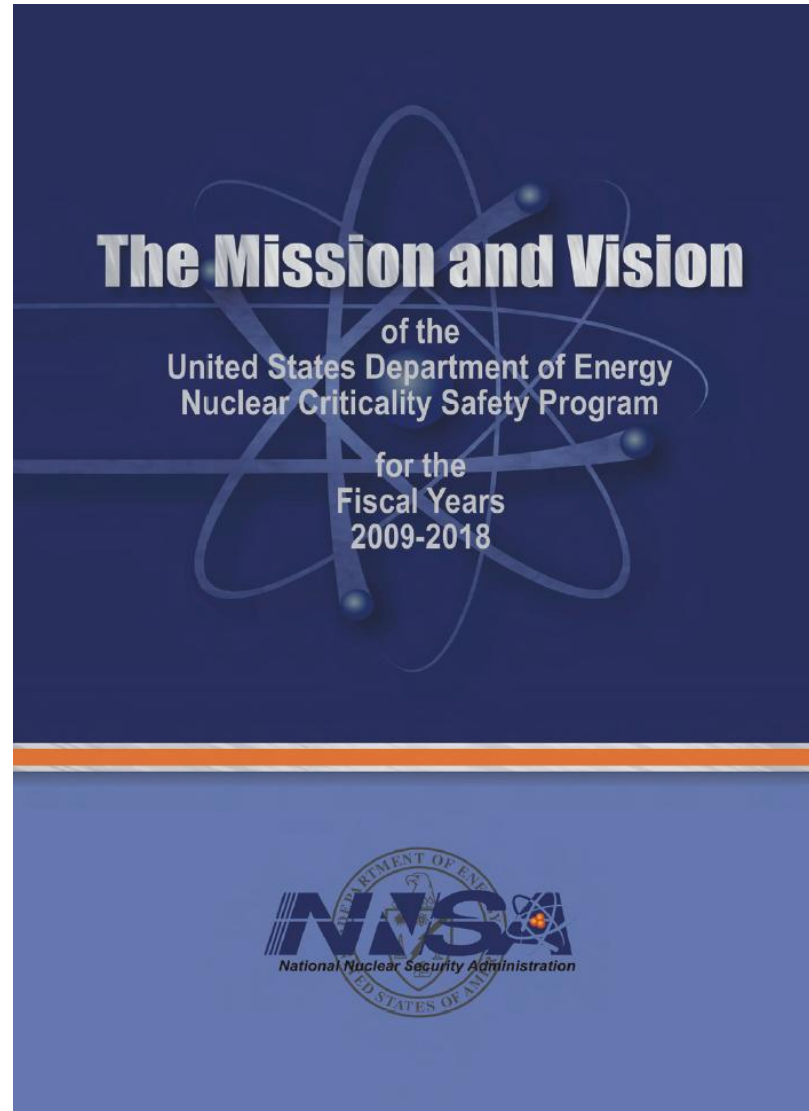
EFCOG Safety Basis Workshop

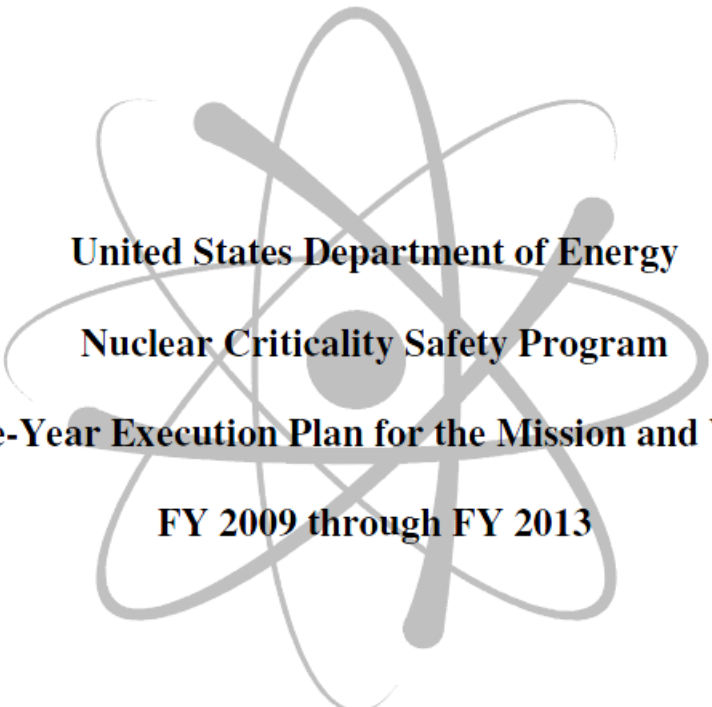
20 – 21 October, 2009

Agenda

- Review upcoming activities (Carroll)
 - NCS Program Mission & Vision Statement
 - NCS Program 5 Year Plan
 - 20 November DOE Program Review (ANS)
- Monday 1027 Standard Breakout (Carroll)
- Tuesday 3007/3009 Breakout Session (Kimball)
- Open Discussion (Carroll)

NCS Program Mission and Vision





United States Department of Energy
Nuclear Criticality Safety Program
Five-Year Execution Plan for the Mission and Vision
FY 2009 through FY 2013

**Table 2-1. Nuclear Criticality Safety Program Funding
Fiscal Years (FY) 2009 – 2013**

FY 2009 (\$K)	FY 2010 (\$K)	FY 2011 (\$K)	FY 2012 (\$K)	FY 2013 (\$K)
\$12,800	\$15,062	\$15,853	\$15,771	\$16,059

NCSP PLANNING CALENDAR FOR FY10

- | | |
|--------------------------|---|
| October 30, 2009 | NCSP Manager Published Five-Year Execution Plan for FY 2010-2014 |
| October 31, 2009 | 4th Quarter FY 2009 Quarterly Progress Reports due to NCSP Manager |
| November 12, 2009 | FY 2009 Close-Out Quarterly Program Review (QPR) Teleconference |
| November 13, 2009 | FY 2009 Accomplishments Posted on the NCSP Website |
| January 8, 2010 | Request for Proposals for FY 2011-2015 to Task Managers |

More . .

1027 Breakout

slide 1 of 4

Concept 1

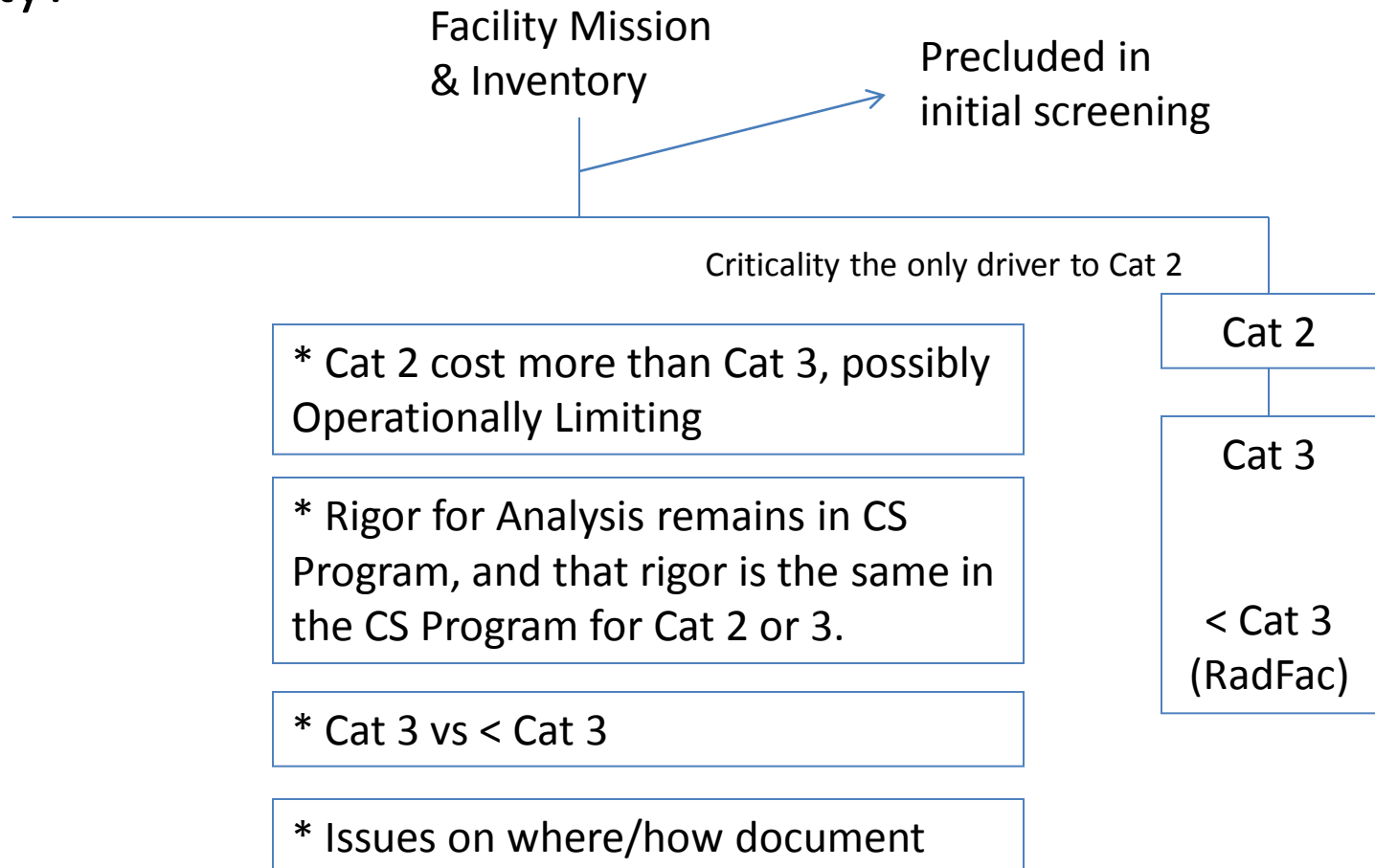
- 1027 as a screening tool allows in Figure 3-1 to use different inventory levels for key elements pending the ability to *preclude criticality based on segmentation and nature of process* arguments.
- For this initial categorization argument, segmentation means robust enough that no operator nor natural phenomena could cause a criticality.
- Nature of Process for initial categorization means there is no possibility for operators to inadvertently cause a criticality with the material in the facility. External (Facility Level controls) such as Acceptance Criteria are allowed.
- Now after initial categorization?

1027 Breakout

slide 2 of 4

Concept 2

- Is Criticality Safety Concerns the only driver for a Cat 2 Facility?

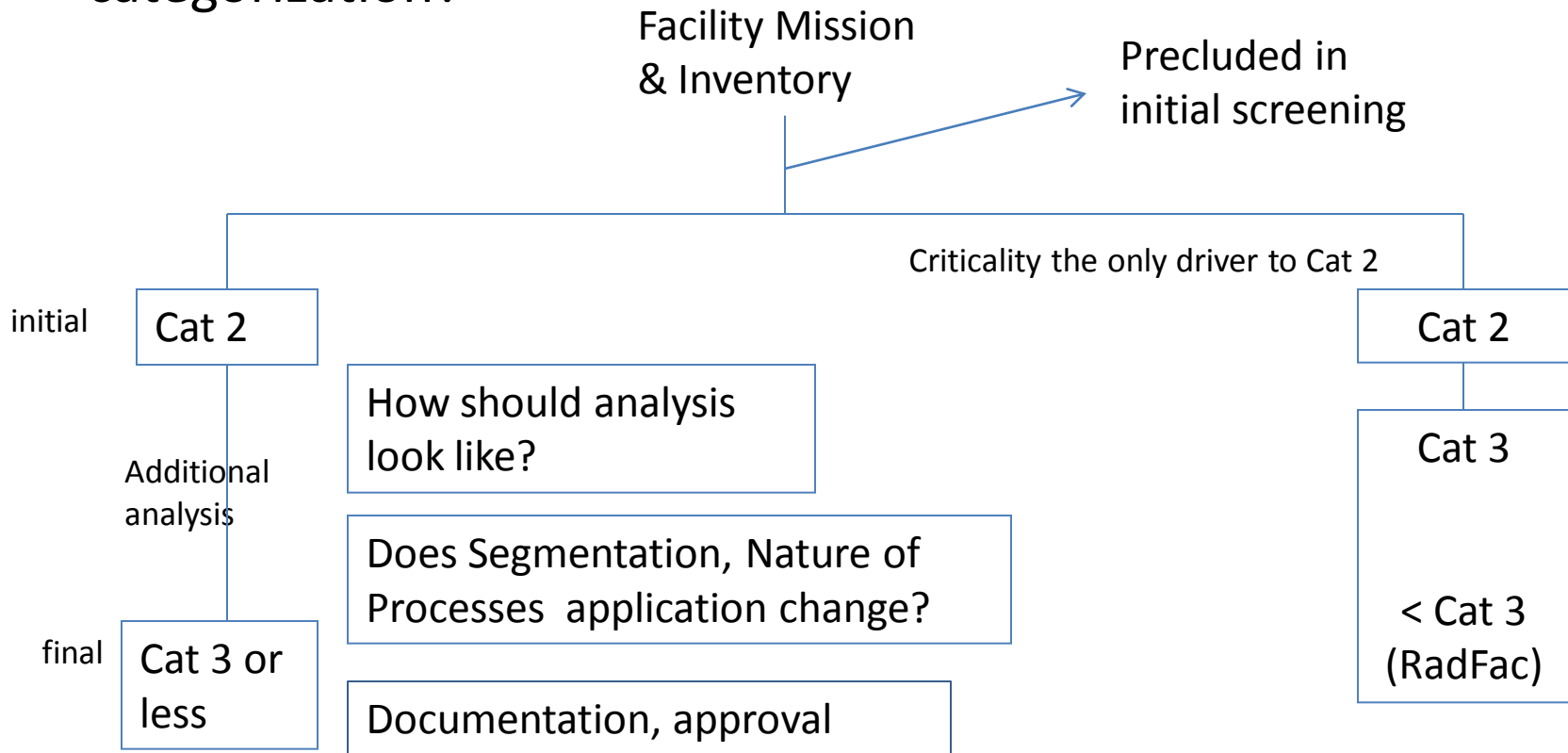


1027 Breakout

slide 3 of 4

Concept 3

- How to incorporate Criticality Safety inputs into final categorization?



1027 Breakout

slide 4 of 4

Path forward

- Create recommendation paper
 - A section on each of the topics discussed this week
 - Topic (ex. Analysis criteria initial to final)
 - Recommended wording
 - Rationale statement
- Similar process for the 3007/3009 topic
- A dedicated 2 – 3 day session is needed