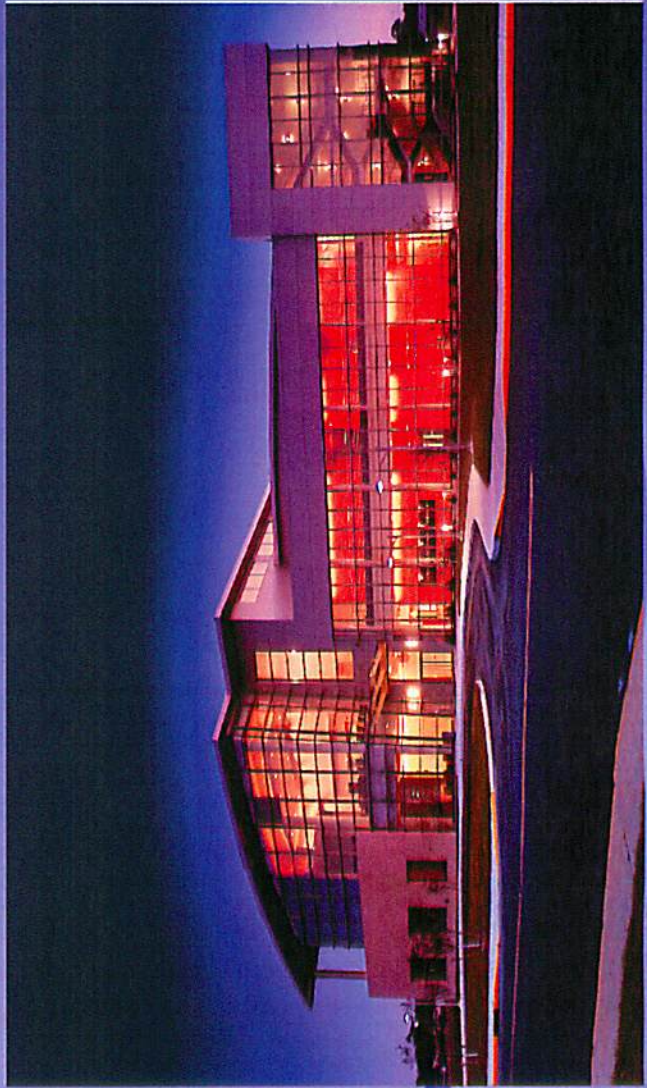


Fall 2008 EFCOG Meeting Brookhaven National Laboratory Long Island, New York

John J. Amabile

Manager, Laboratory Protection Division

July 30, 2008



SIXTY YEARS
OF DISCOVERY
1947-2007

BROOKHAVEN
NATIONAL LABORATORY



Brookhaven National Lab Aerial View



BNL Snapshot

- BNL just celebrated its 60th anniversary.
- Six Nobel Prizes garnered: Latest in 2002 and 2003.
- S&T Portfolio; Nuclear & Particle Physics, Basic Energy Sciences, Life Sciences, Environment, National Security, Computational Science.
- Threat level 4 site, category B facility, with category IV SNM.
- Approximately 2,700 employees and 4,000 User Guests per year.
- Over 10,000 visiting Guests per year.
- Processed 2,525 non-sensitive, 1,429 sensitive, and 6 SST FN last year.
- Housing for approximately 800.
- 247 access authorizations holders.
- PF of SPO I responding to over 400 emergency calls per year.
- Several world renown scientific facilities and projects with additional ones planned for development.
- BNL covers 5,321 acres of property: 350 buildings, 210 portable structures, 29 miles of roads, and 12 miles of sidewalks.
- BNL is located approximately 50 miles from New York City.

Long Island Airports

- Islip Long Island MacArthur (ISP) Airport: Islip, New York, (Best Choice!) (631) 467-6161
- LaGuardia Airport (LGA): Queens, New York, (718) 476-5000
- John F. Kennedy International (JFK) Airport: Jamaica (Queens), New York, (718) 656-4520

- <http://www.macarthurairport.com/>
- <http://www.quickaid.com/airports/lga/>
- <http://www.quickaid.com/airports/jfk/>

BNL Lodging Information

- **Inn at East Wind**
5720 Route 25A
Wading River, NY 11791
631-929-3500
Exit 68 off the LIE
[East Wind homepage](#)
- **Courtyard by Marriott at MacArthur Airport**
5000 Express Drive South
Ronkonkoma, NY 11779
631-612-5000
[Marriott Courtyard](#)
- **Radisson Hotel MacArthur Airport**
1730 North Ocean Avenue
Holtsville, NY 11742
(631) 758-2900
Exit 63 off the Long Island Expressway (LIE)
[Radisson homepage](#)
- **Holiday Inn Long Island/Islip Airport**
3845 Veterans Memorial Highway
Ronkonkoma, NY 11779
(631) 585-9500, (800) HOLIDAY
Exit 57 off the LIE
[Holiday Inn homepage](#)
- **[Hampton Inn Brookhaven](#)**
2000 North Ocean Ave
Farmingville, NY 11738
(631)732-7300
Located off exit 63 of the LIE
[Hampton Inn](#)

BNL Badging Requirements

- Brookhaven National Laboratory recognizes the HSPD-12 badge and all DOE standard badges.

- Your site specific badges are not valid.
 - When you register for the event ensure you annotate that you do not have the HSPD-12 or DOE standard badge.
 - When you arrive at BNL for the first time, the SPO will direct you to our Visitor's Center.
 - The Visitor's Center will issue you a temporary badge that will be valid throughout your visit.

Hope to see you!

