

EFCOG
Security Working Group

Security Metrics

Reuben C. McGilvary III

Security Metrics

- Customer Expectation
- Scoping Decision SWG October 10, 2007
- Data Request October 29, 2007
- 6 of 36 Performance and Compliance
Mixed

Security Incidents

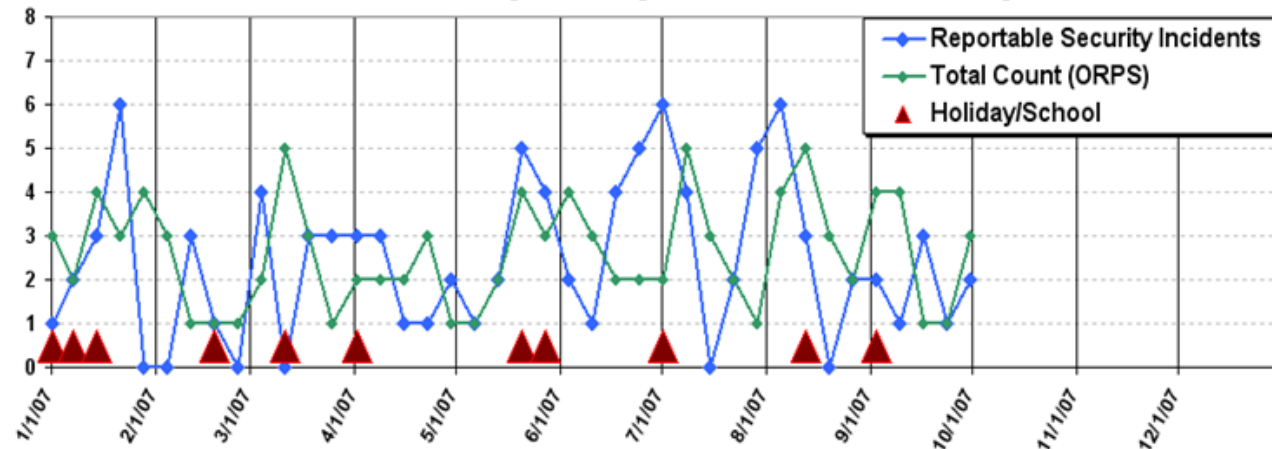
- Metric Goals
 - Demonstrate Trending
 - Impact Measurement Index Tables
 - Rule based
 - Consistent across sites
 - Level Playing Field
 - Number of man-hours worked
 - Exposure

Reportable Security Incidents and Safety Occurrence Reporting (ORPS)

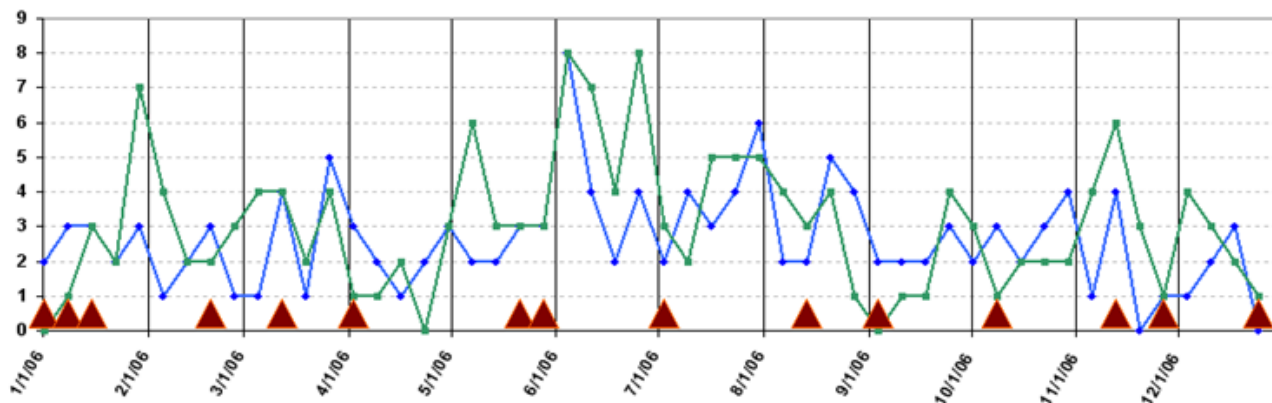
The charts below represent a correlation in both LANL reportable security incidents and ORPS numbers, in relation to **legal holidays** and **significant Los Alamos Public School days**.

Espanola Valley Schools have similar significant school days, within a few days of LAPS.

Data points represent incidents/ORPS per week.



1/1/2007	New Years
1/8/2007	School Resumes
1/15/2007	MLK Day
2/19/2007	Presidents Day
3/9/2007	In service day
4/2/2007	Spring Break
5/25/2007	Last day of school
5/28/2007	Memorial Day
7/4/2007	Independence Day
8/15/2007	1st Day of School
9/3/2007	Labor Day
10/8/2007	Columbus Day
11/12/2007	Veterans Day
11/22/2007	Thanksgiving
12/24/2007	Winter Break



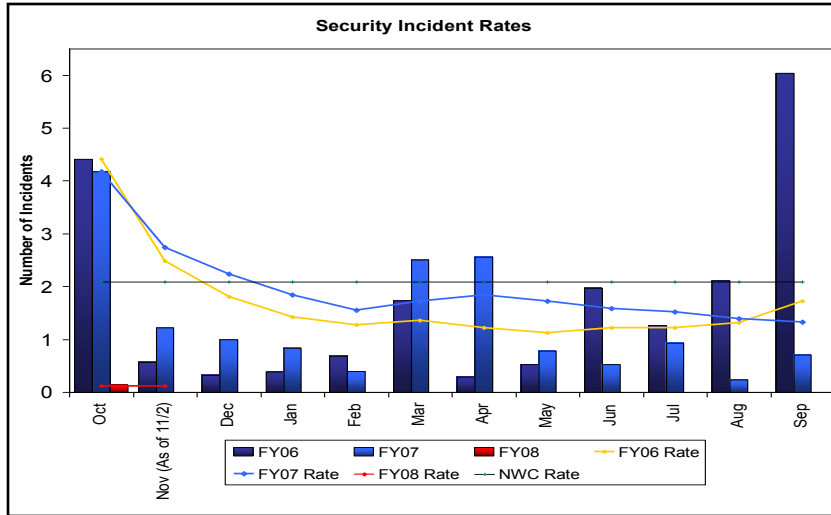
1/2/2006	New Years (LANL)
1/9/2006	School Resumes
1/16/2006	MLK Day
2/20/2006	Presidents Day
3/10/2006	In service day
4/3/06	Spring Break
5/26/2006	Last day of school
5/29/2006	Memorial Day
7/4/2006	Independence Day
8/16/2006	1st Day of School
9/4/2006	Labor Day
10/9/2006	Columbus Day
11/10/2006	Veterans Day
11/23/2006	Thanksgiving
12/25/2006	Winter Break

School data courtesy LAPS and EVS



Positive performance

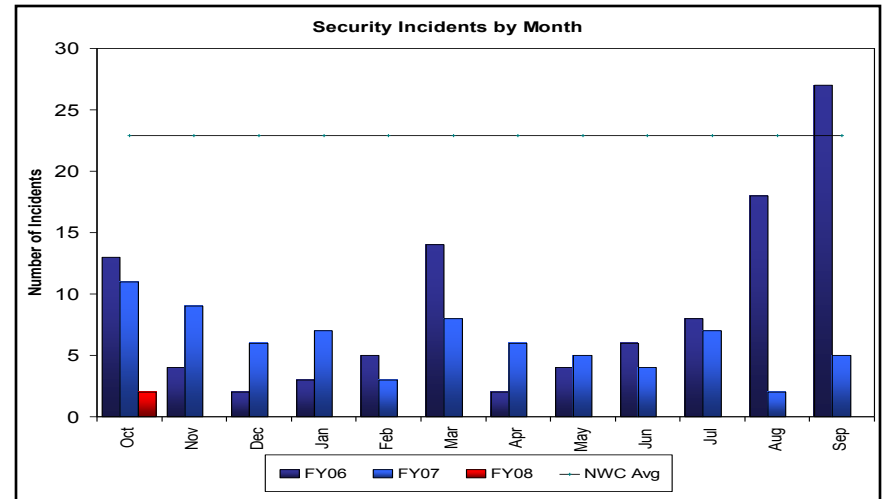
Security Incidents



October Security Incidents

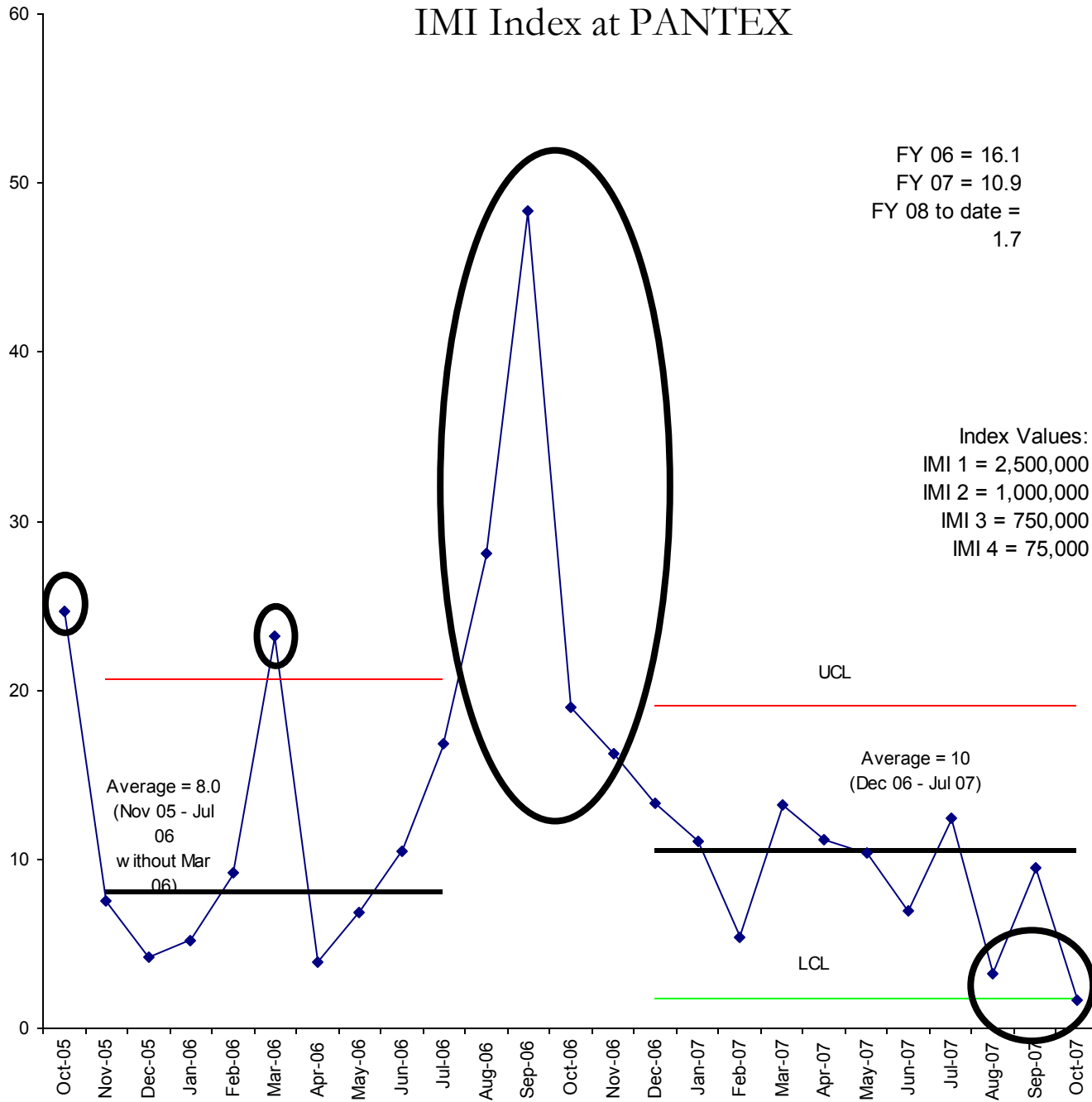
- An incident occurred in 12-127 when an employee left for lunch without securing classified information and locking the repository.
- A near miss incident occurred in 12-82 when an employee left Argus on access and then exited the plant.
- A near miss incident occurred in 12-106 when an employee left a PTS key for a classified computer in the open position and unattended.

Division	FY08						Near Misses
	Impact Measurement Index					Total	
	1	2	3	4	Total		
General Manager	0	0	0	0	0	0	0
CFO	0	0	0	0	0	0	0
Law	0	0	0	0	0	0	0
Deputy GM	0	0	0	0	0	0	0
DSW & Campaigns	0	0	0	0	0	0	0
RTBF Programs	0	0	0	0	0	0	0
Quality & Perf. Assur.	0	0	0	0	0	0	0
Manufacturing	0	0	0	0	0	0	1
Maintenance	0	0	0	0	0	0	0
Supply Chain Management	0	0	0	0	0	0	1
C&EPD	0	0	0	0	0	0	0
Production Projects	0	0	0	0	0	0	0
Human Resources	0	0	0	0	0	0	0
S & S	0	0	0	0	0	0	0
ES & HS	0	0	0	0	0	0	0
Applied Technology/ R&D	0	0	0	0	0	0	0
Environmental Projects & Op	0	0	0	0	0	0	0
Engineering	0	0	0	1	1	1	0
Totals	0	0	0	1	1	1	2

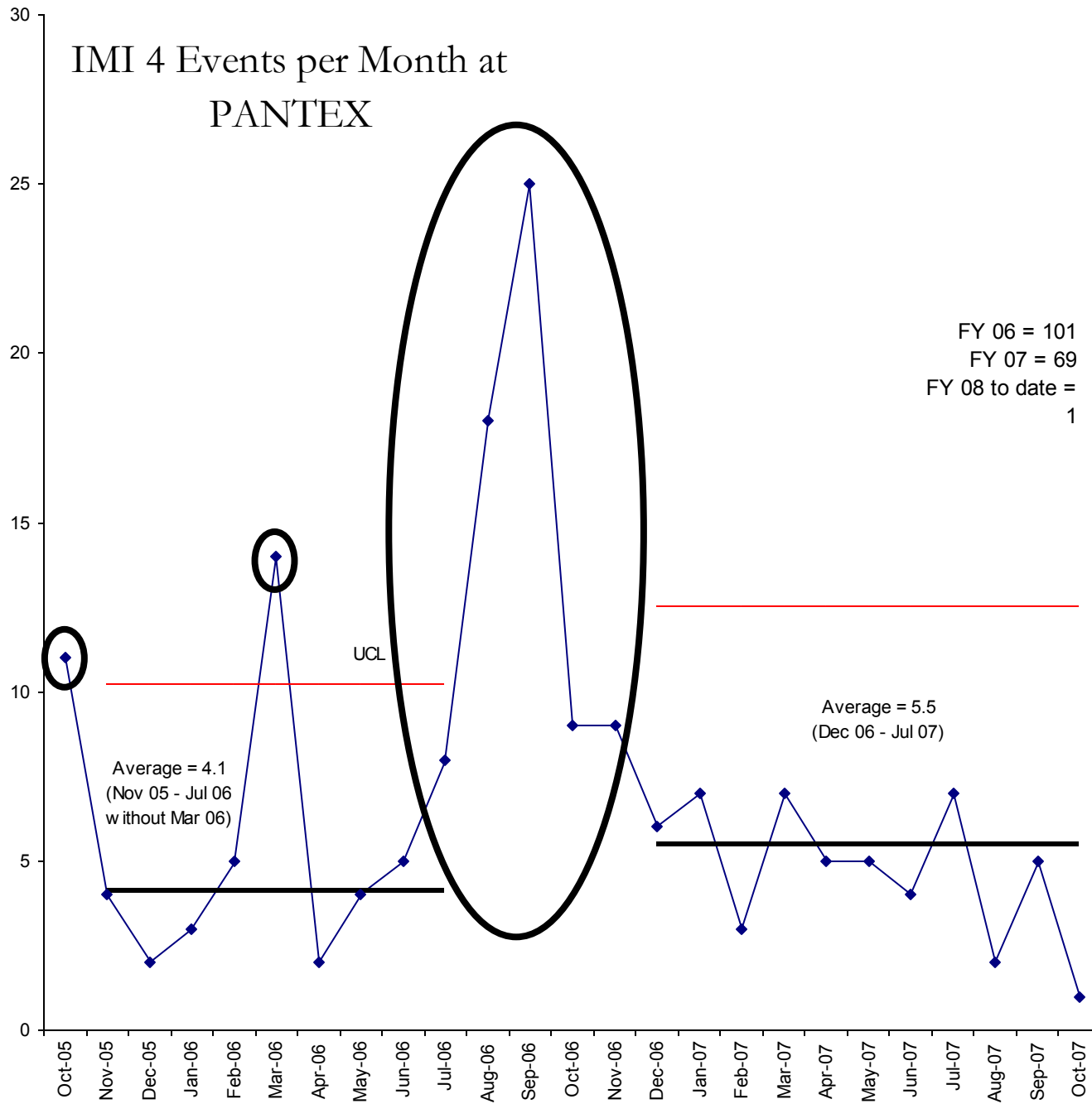


Sr Manager Owner: Mark Bentle
 Mid-Manager Owner: Reuben McGilvary
 Data Contact: Robert Barr
 Updated: 11/01/07

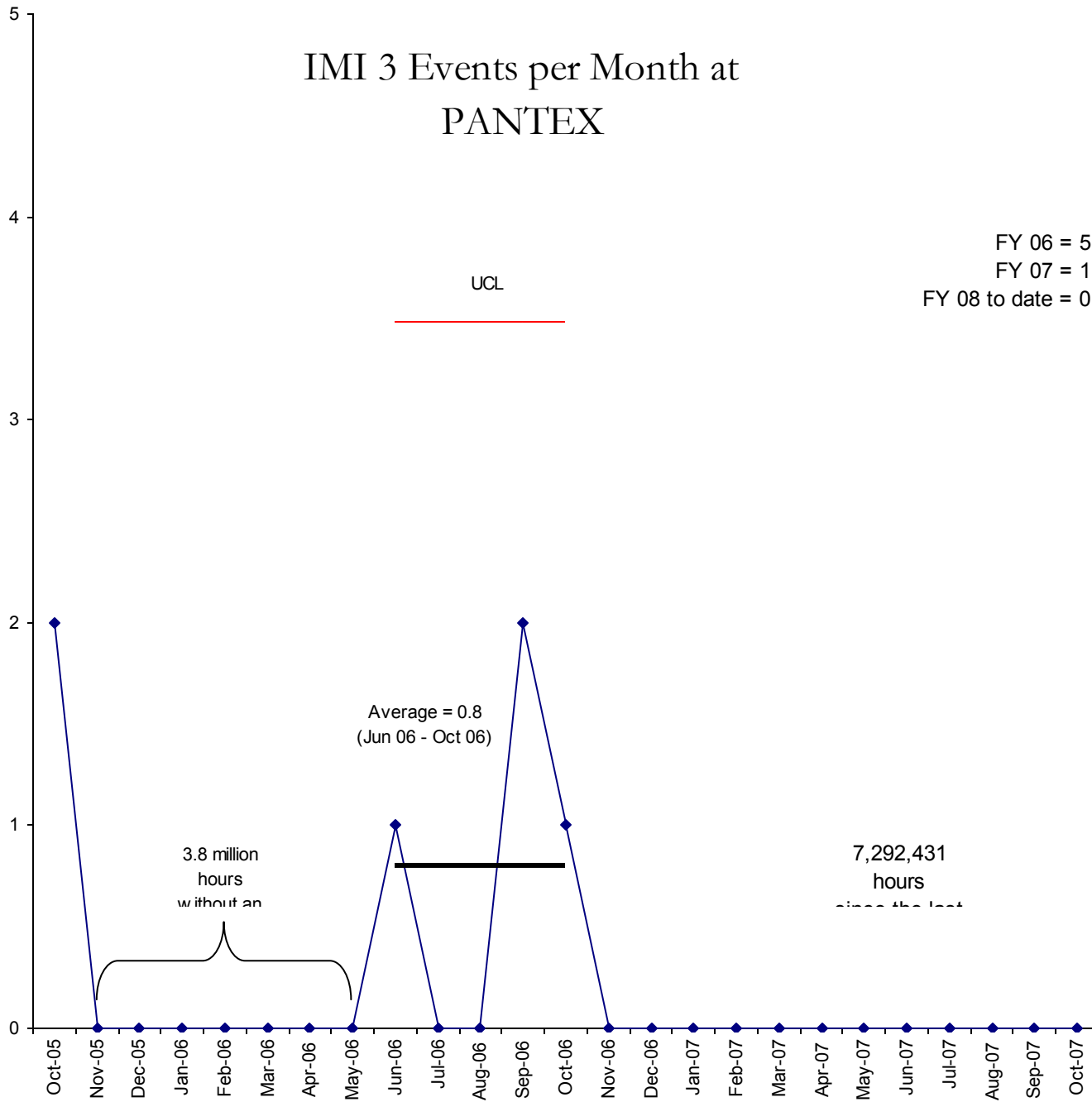
IMI Index at PANTEX



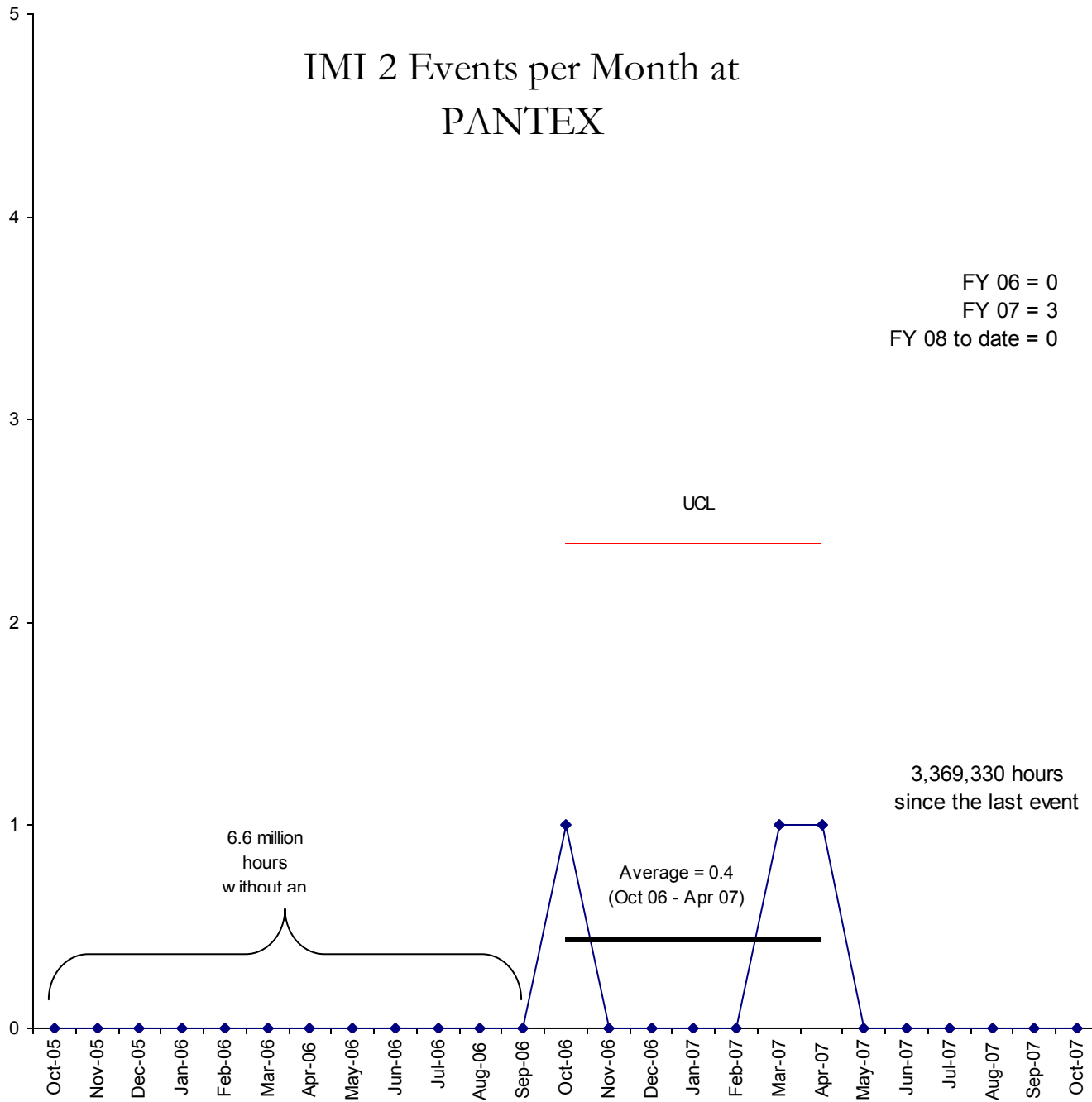
IMI 4 Events per Month at PANTEX



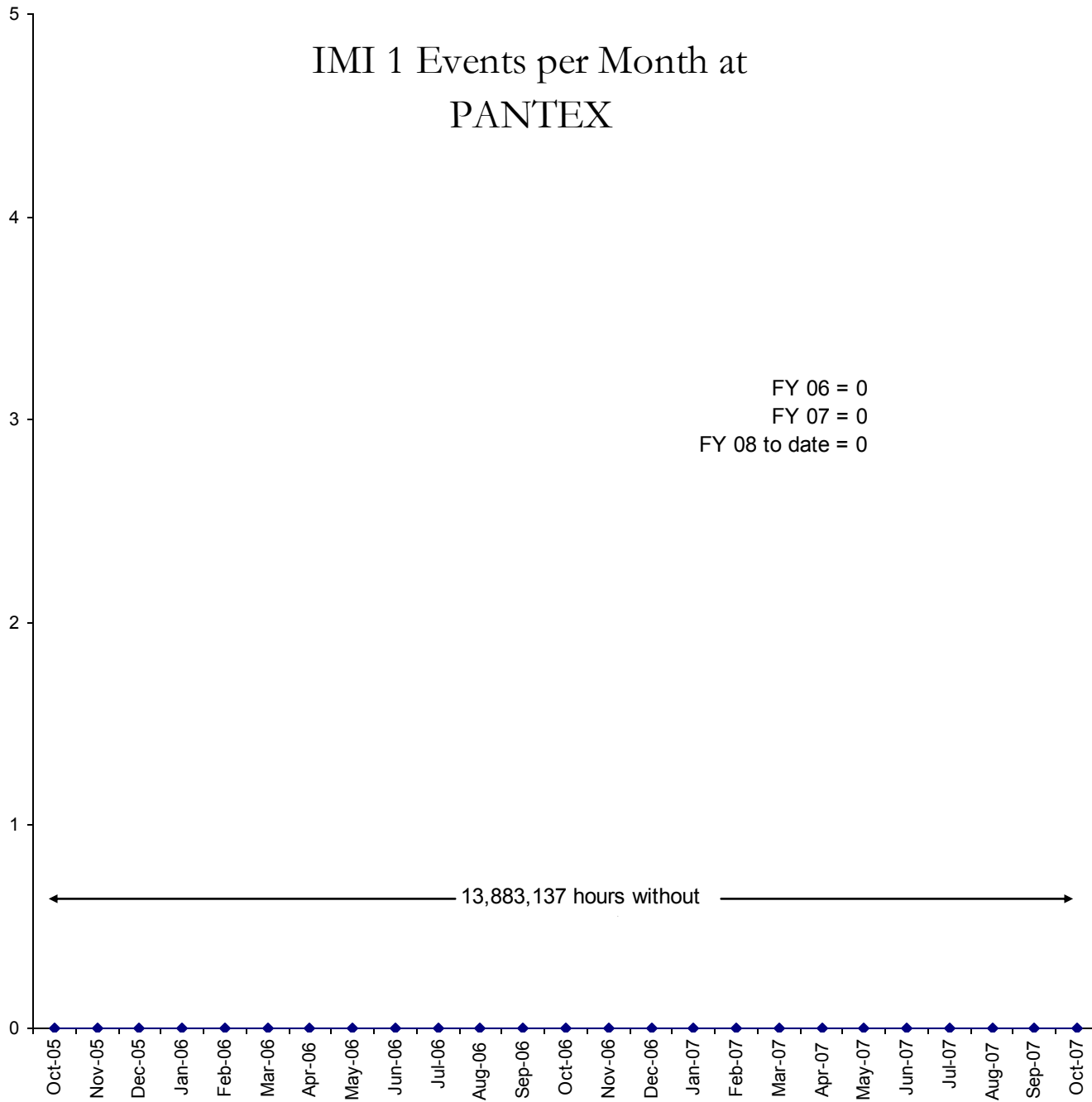
IMI 3 Events per Month at PANTEX



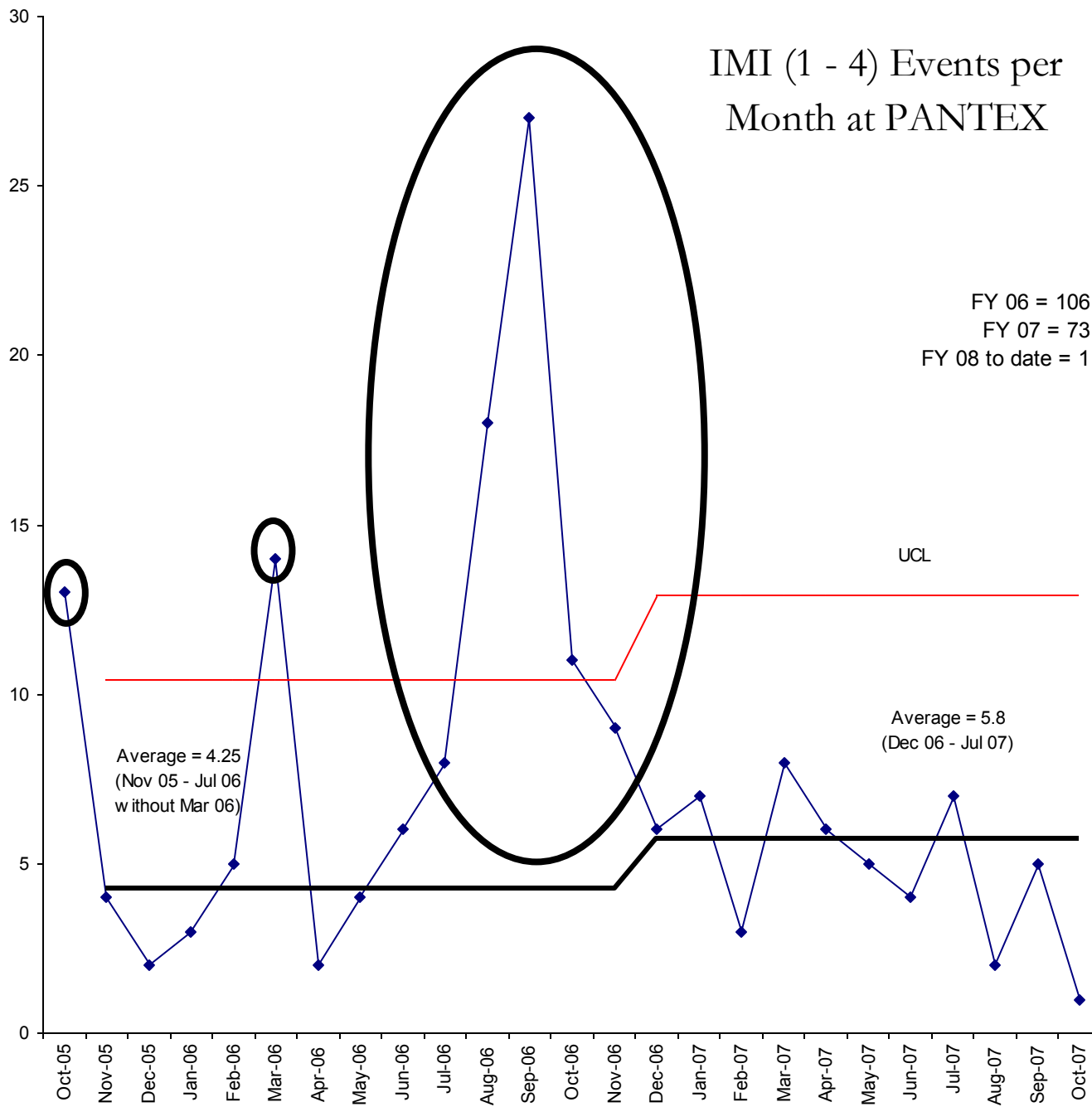
IMI 2 Events per Month at PANTEX



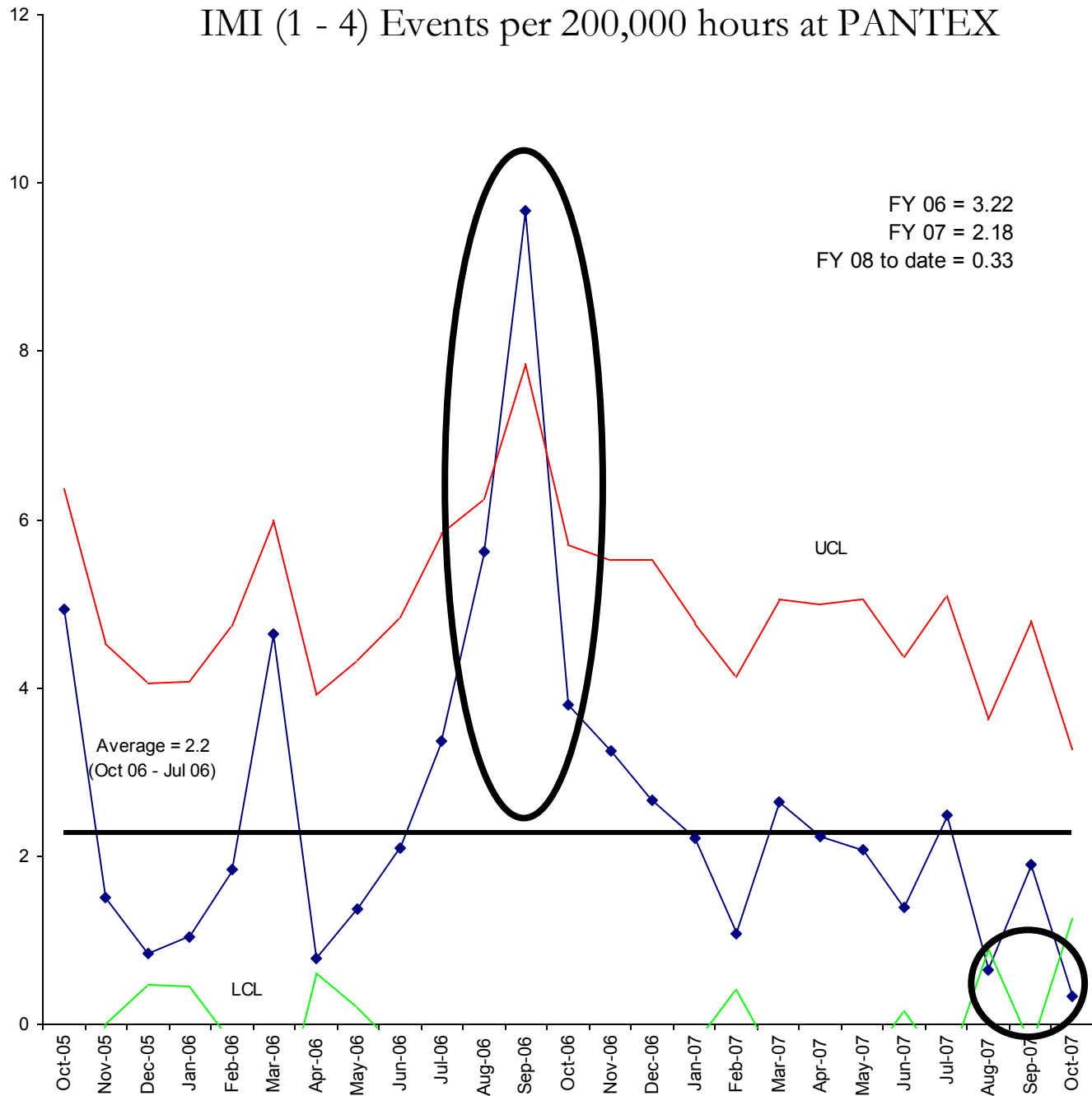
IMI 1 Events per Month at PANTEX



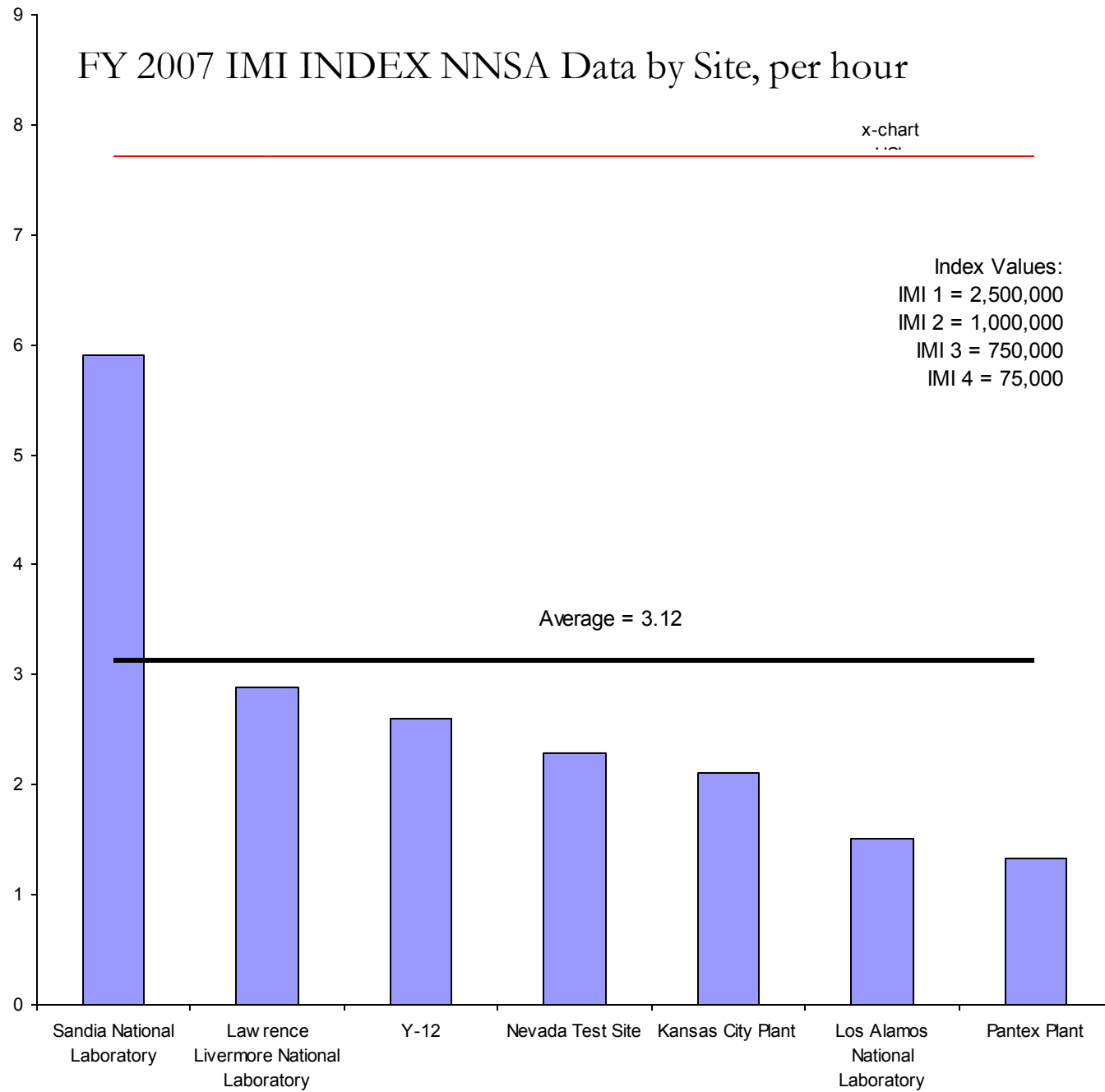
IMI (1 - 4) Events per Month at PANTEX



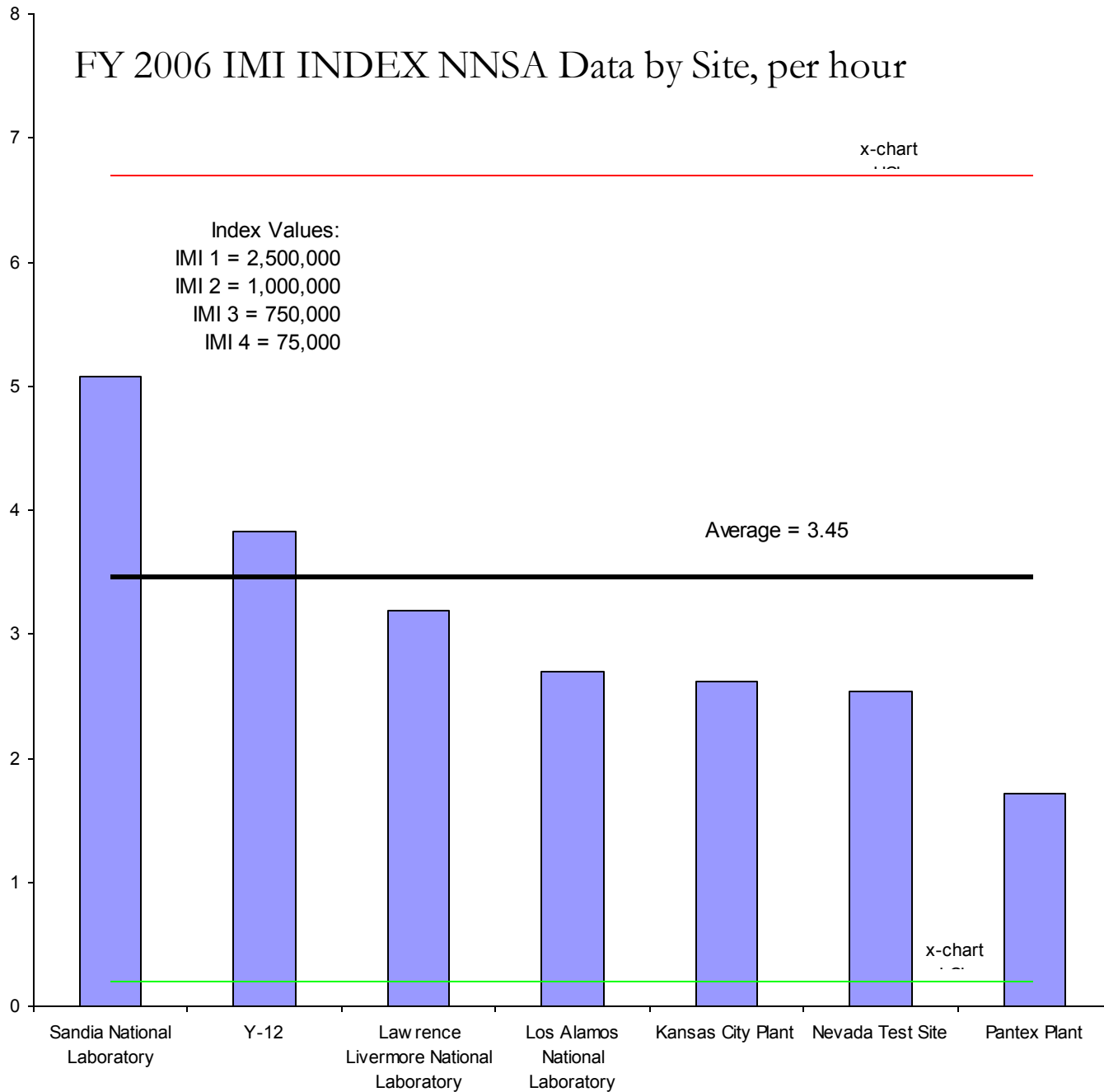
IMI (1 - 4) Events per 200,000 hours at PANTEX



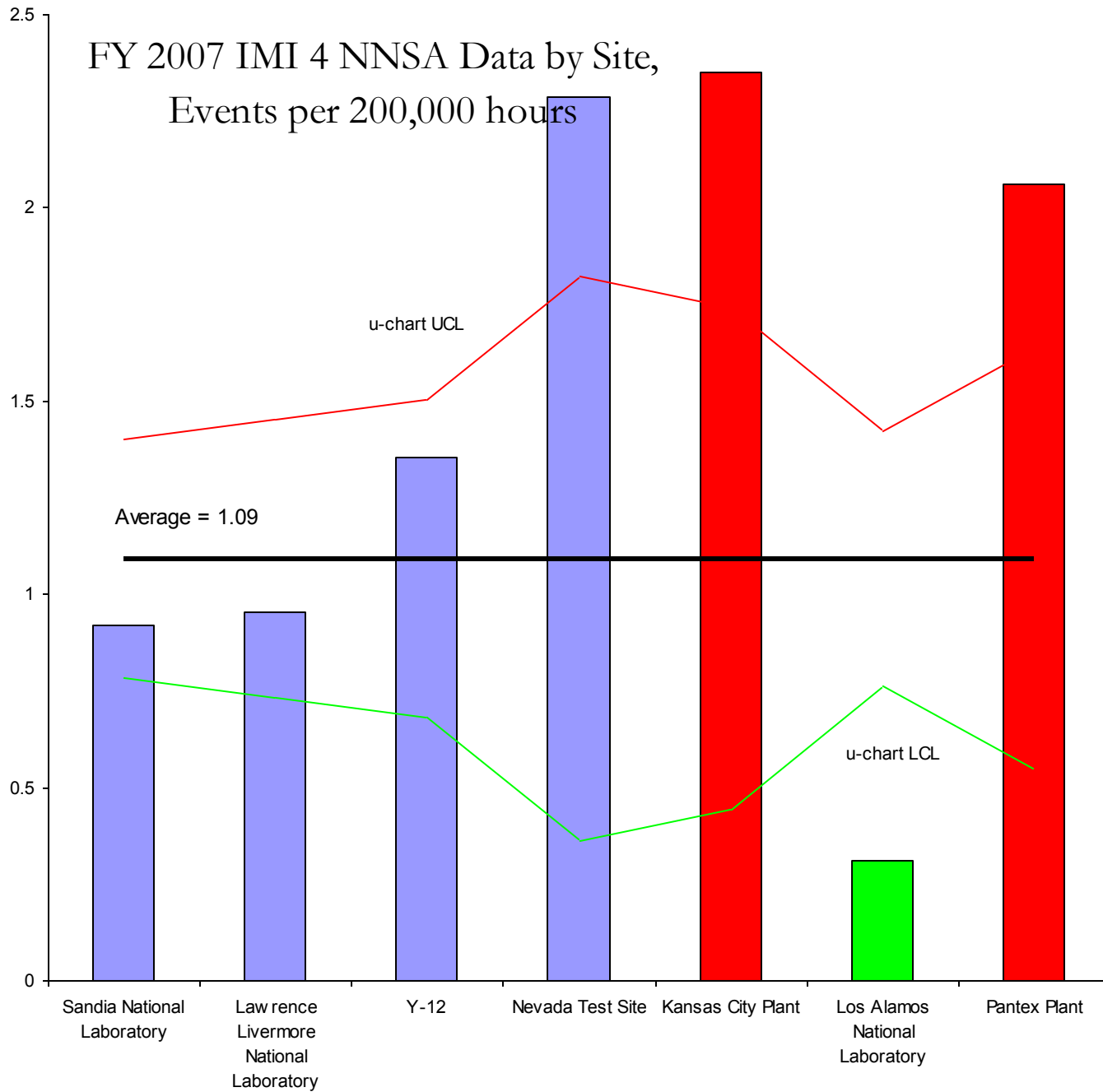
FY 2007 IMI INDEX NNSA Data by Site, per hour



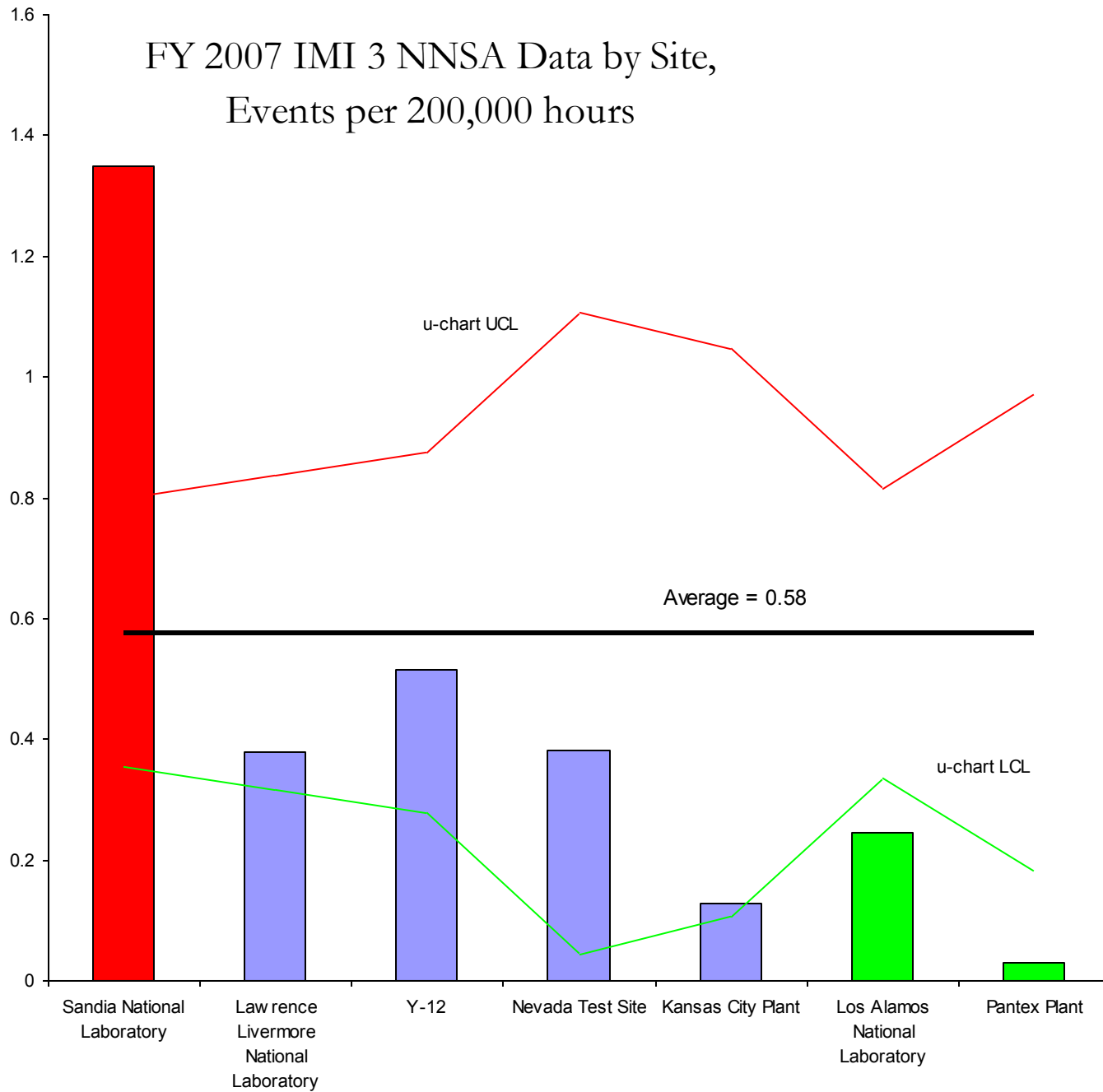
FY 2006 IMI INDEX NNSA Data by Site, per hour



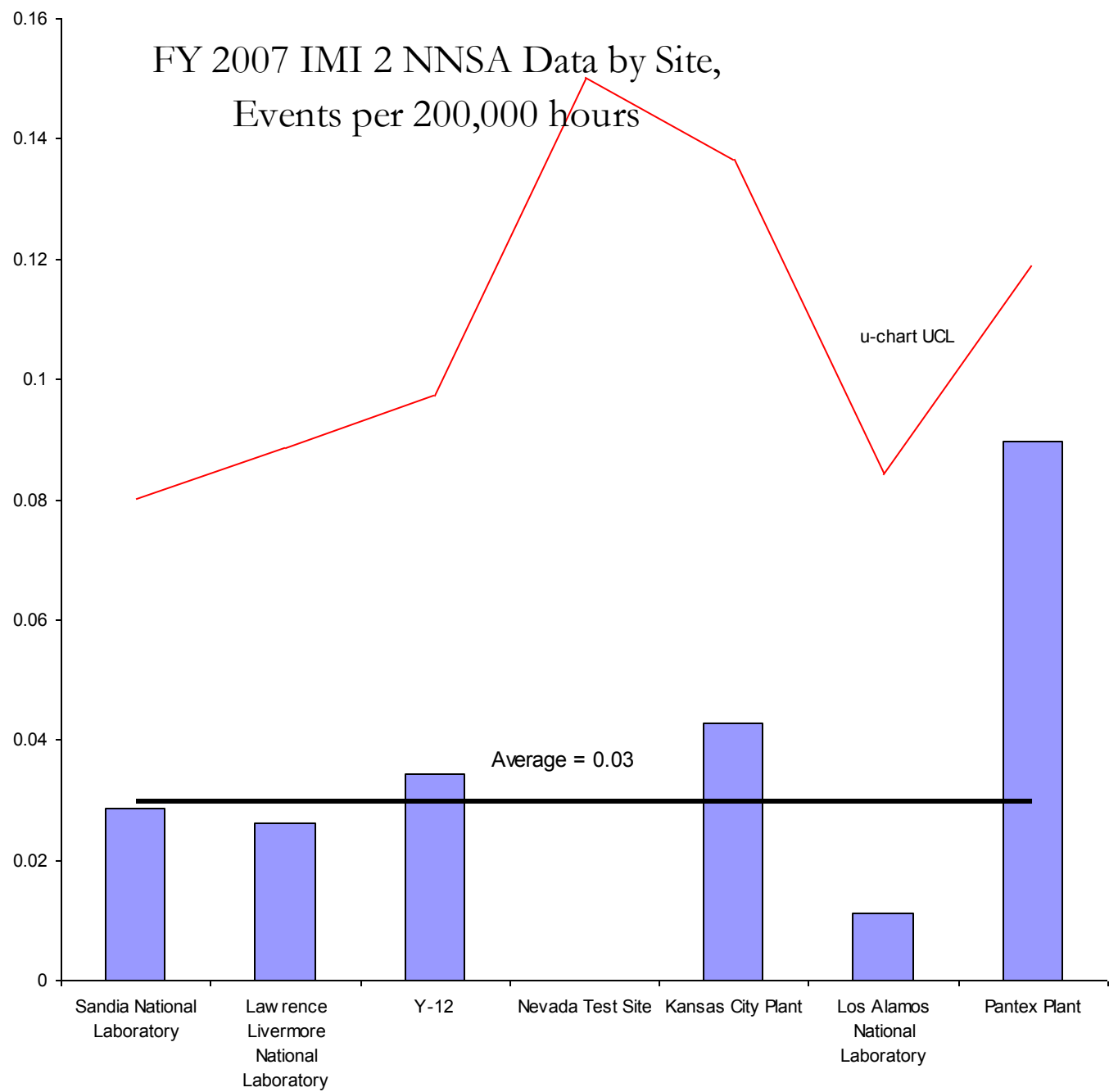
FY 2007 IMI 4 NNSA Data by Site, Events per 200,000 hours



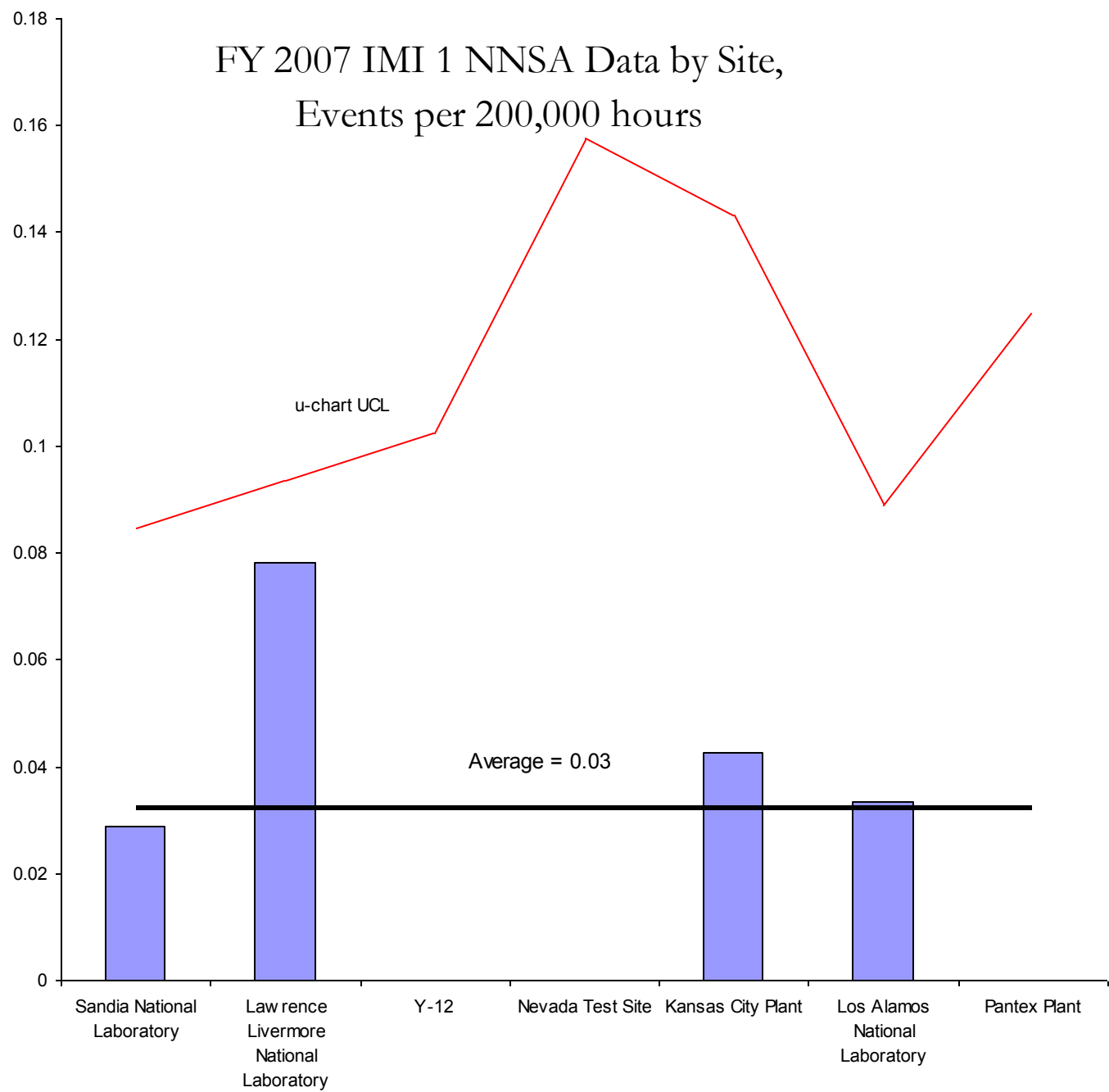
FY 2007 IMI 3 NNSA Data by Site, Events per 200,000 hours



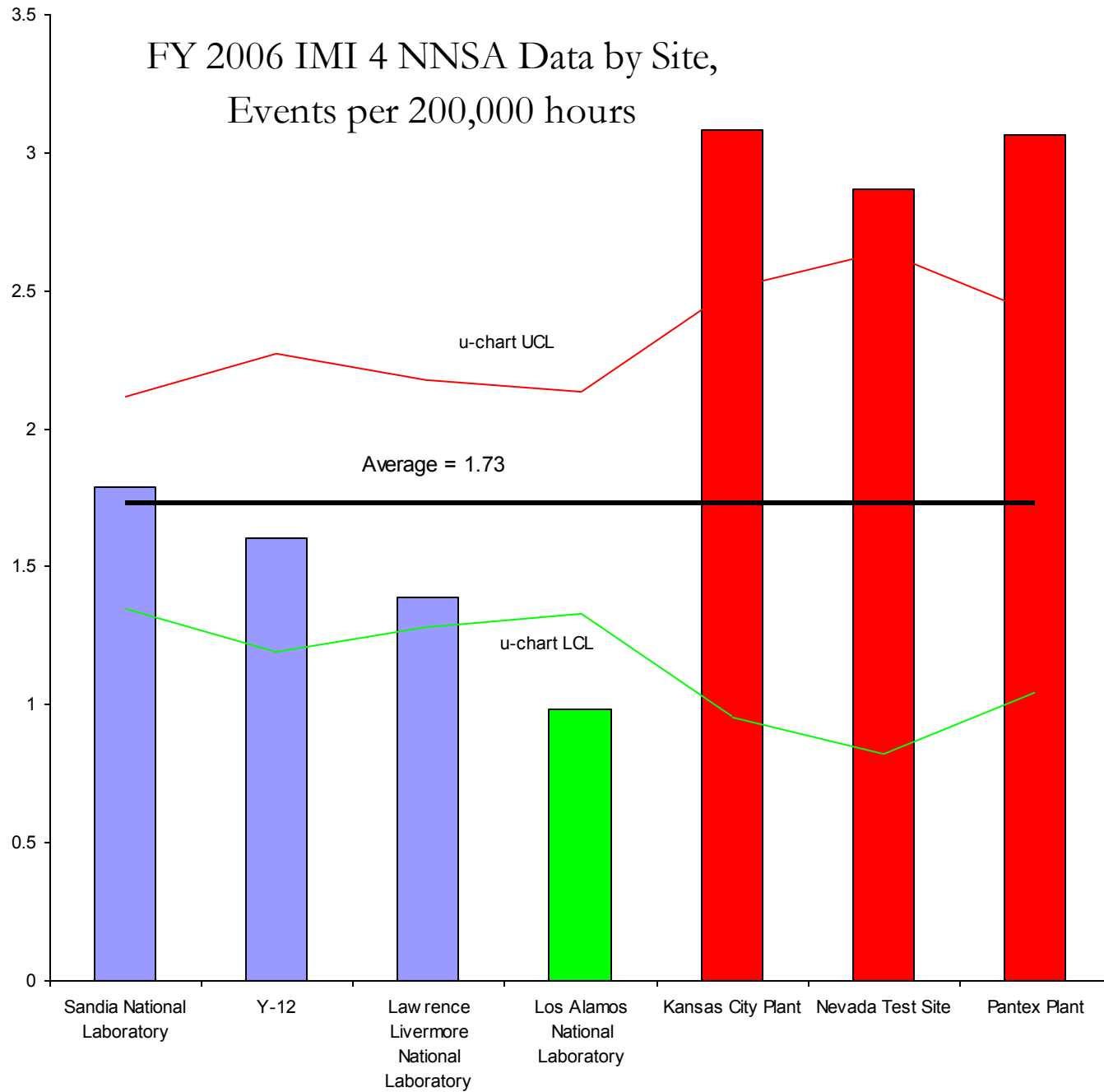
FY 2007 IMI 2 NNSA Data by Site, Events per 200,000 hours



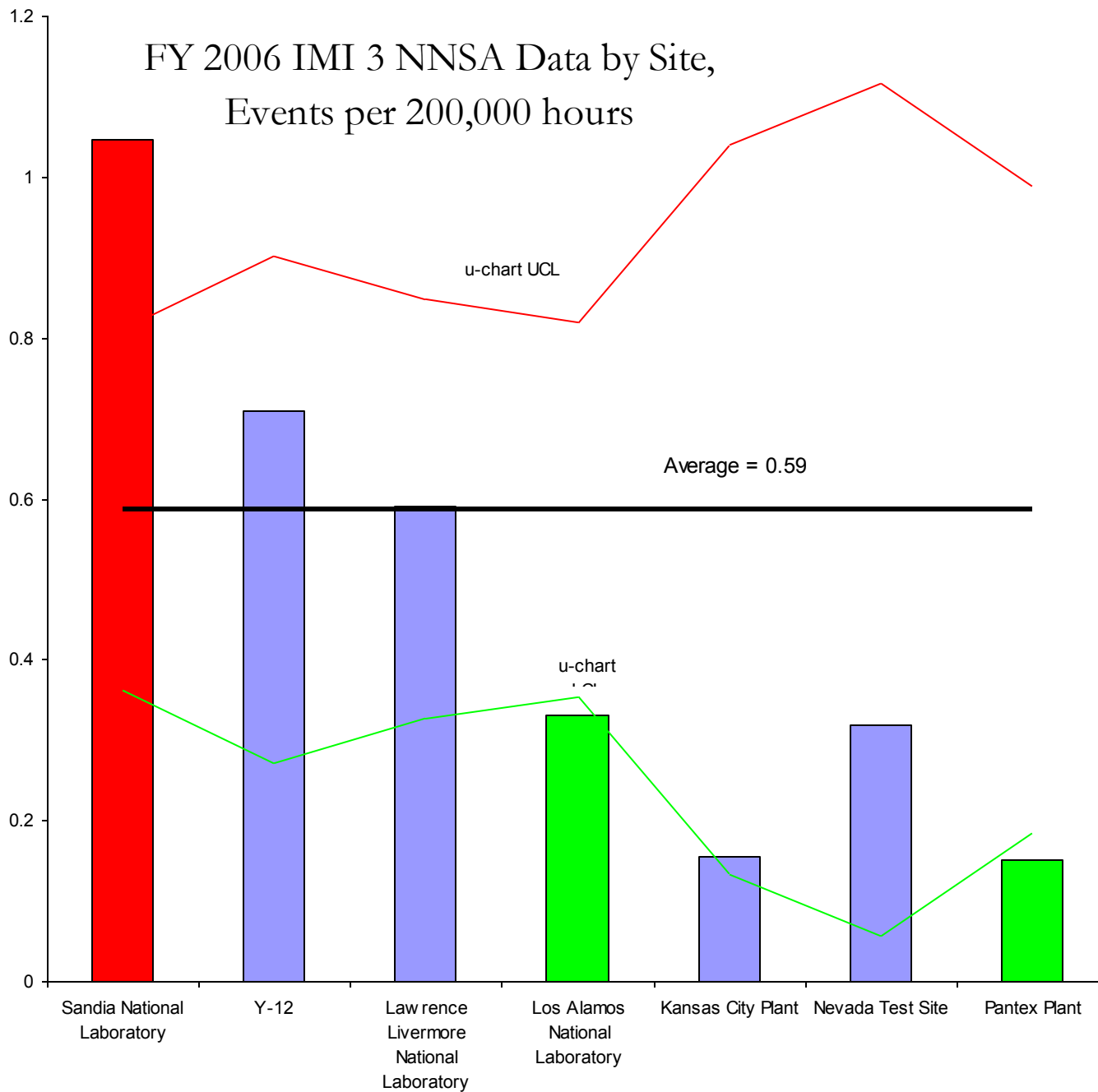
FY 2007 IMI 1 NNSA Data by Site, Events per 200,000 hours



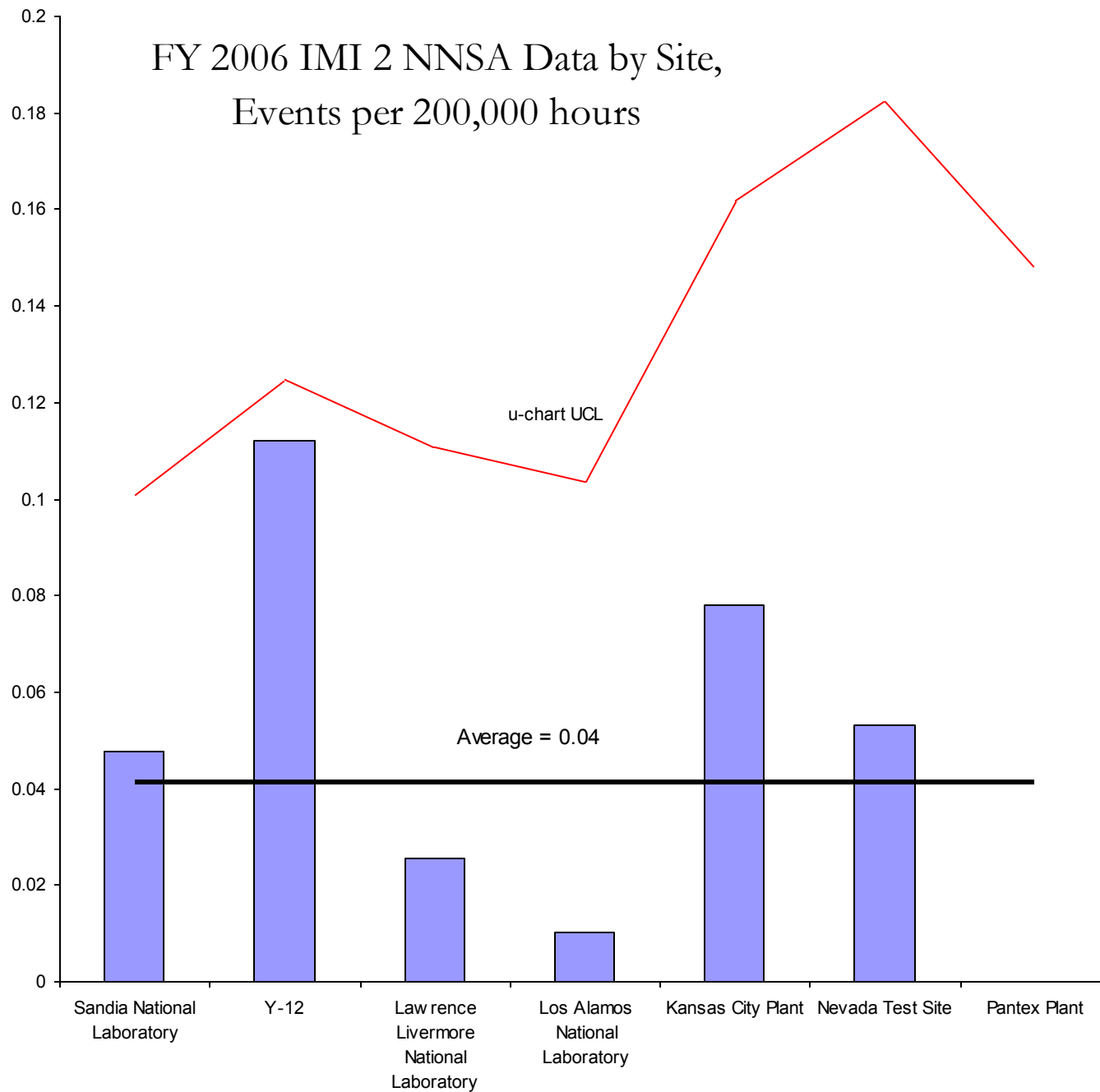
FY 2006 IMI 4 NNSA Data by Site, Events per 200,000 hours



FY 2006 IMI 3 NNSA Data by Site, Events per 200,000 hours



FY 2006 IMI 2 NNSA Data by Site, Events per 200,000 hours



FY 2006 IMI 1 NNSA Data by Site, Events per 200,000 hours

