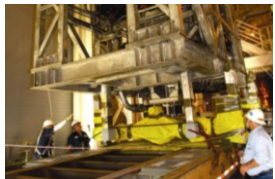
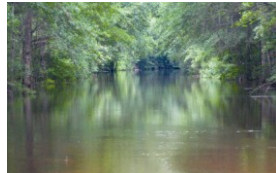




# Welcome to SRS



**Geoff Reynolds**  
**WSRC Manager, Safeguards Security**  
**and Emergency Services**  
**October 10, 2007**

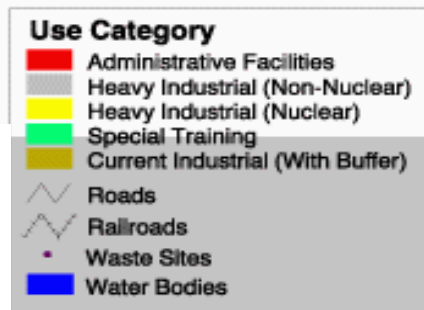
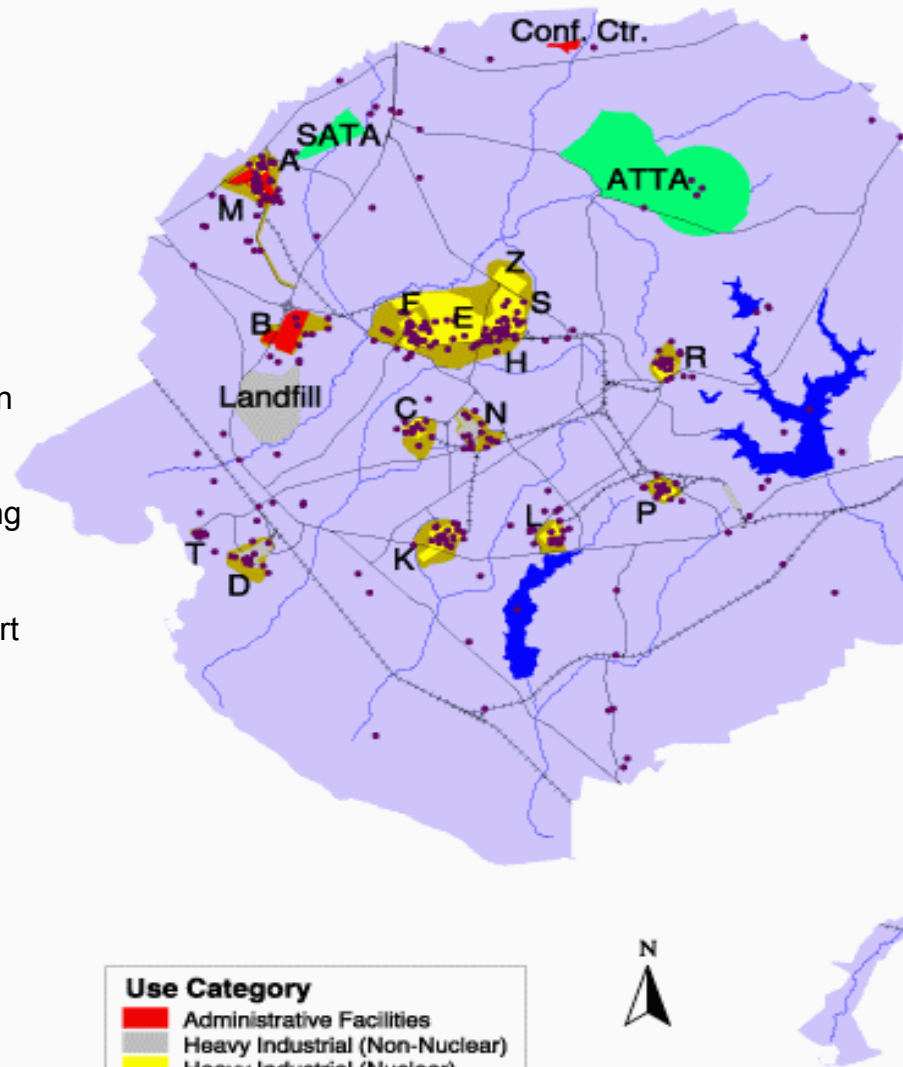
# Savannah River Site

## \* SRS Attributes

- \* 300 square miles
- \* WSRC Employees  
(4000 Q, 3500 L, 1000 uncleared)
- \* 650 in HRP
- \* Total Budget = \$1.2 B / year  
(Security budget = \$ 160 M )
- \* > \$ 6 billion in total capital
- \* Pu Storage and disposition
- \* Nuclear Material storage & disposition
- \* Foreign and domestic fuel receipts
- \* TRU waste management & processing
- \* Tritium processing
- \* SRNL Scientific Research and support
- \* HLW Storage, Processing & glassification
- \* HW Storage
- \* Environmental Remediation
- \* D&D
- \* New Missions (MOX, PDCF & WSB)

## \* Security Attributes

- \* 9 active barricades
- \* 800 Protective Force
- \* 120 Central Security FTEs  
- Program, Personnel, Cyber, Physical, & MC&A
- \* Access Control – E3S to Argus
- \* 13 PPA
- \* 2 PA
- \* 14 Limited Areas
- \* 1 Material Access
- \* 6 Vaults
- \* 14 Vault type rooms
- \* SP for each of the above
- \* 1 cat I, 3 cat II, 2 cat III  
19 cat IV
- \* 300 Repositories
- \* Locks/keys 0 cat I,  
~ 20 cat II, >15,000 cat III
- \* 10,000 unclass. computers
- \* 500 class. computers
- \* 60 class. Phones
- \* > 1 million classified docs.

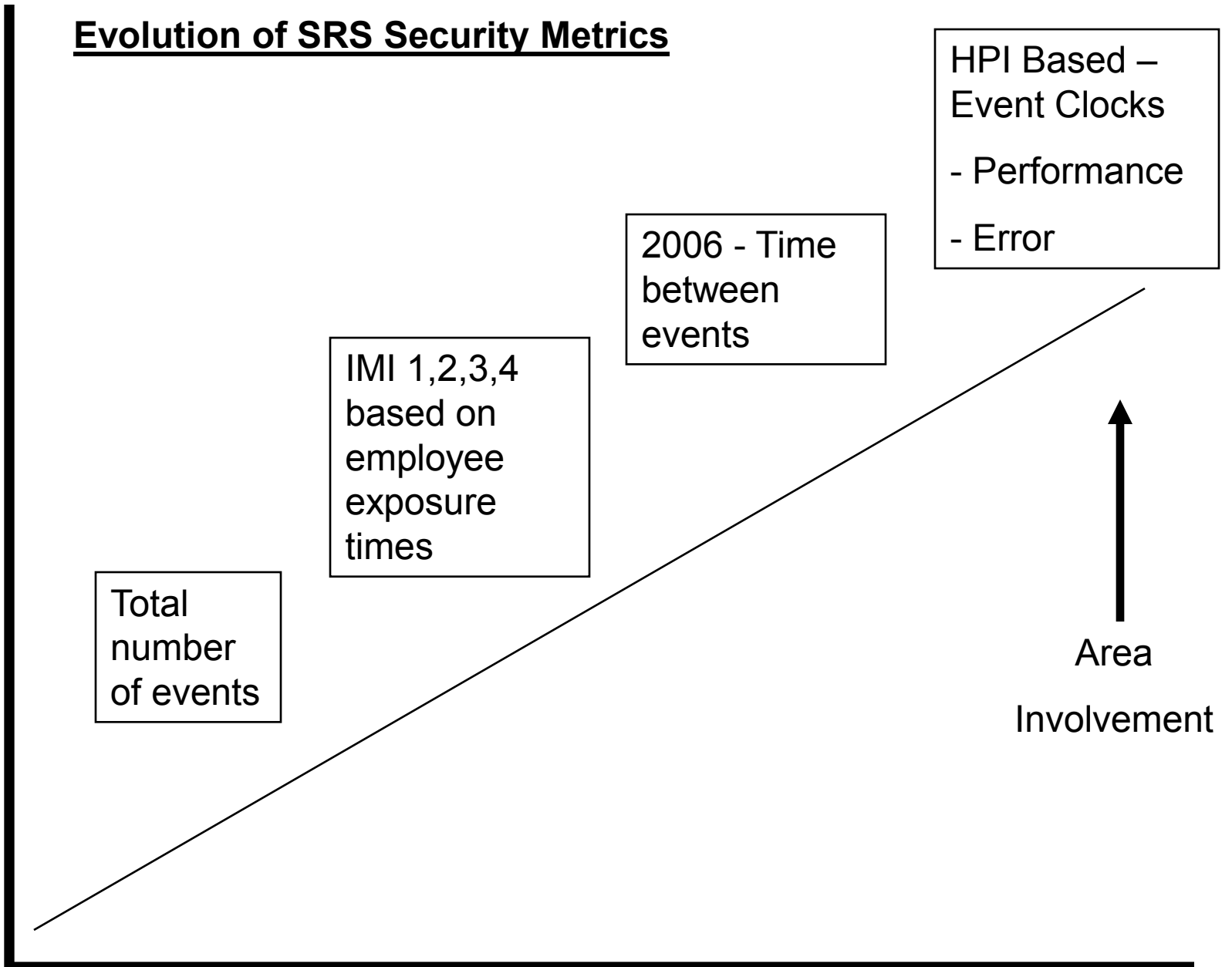


# Successful EFCOG Meeting

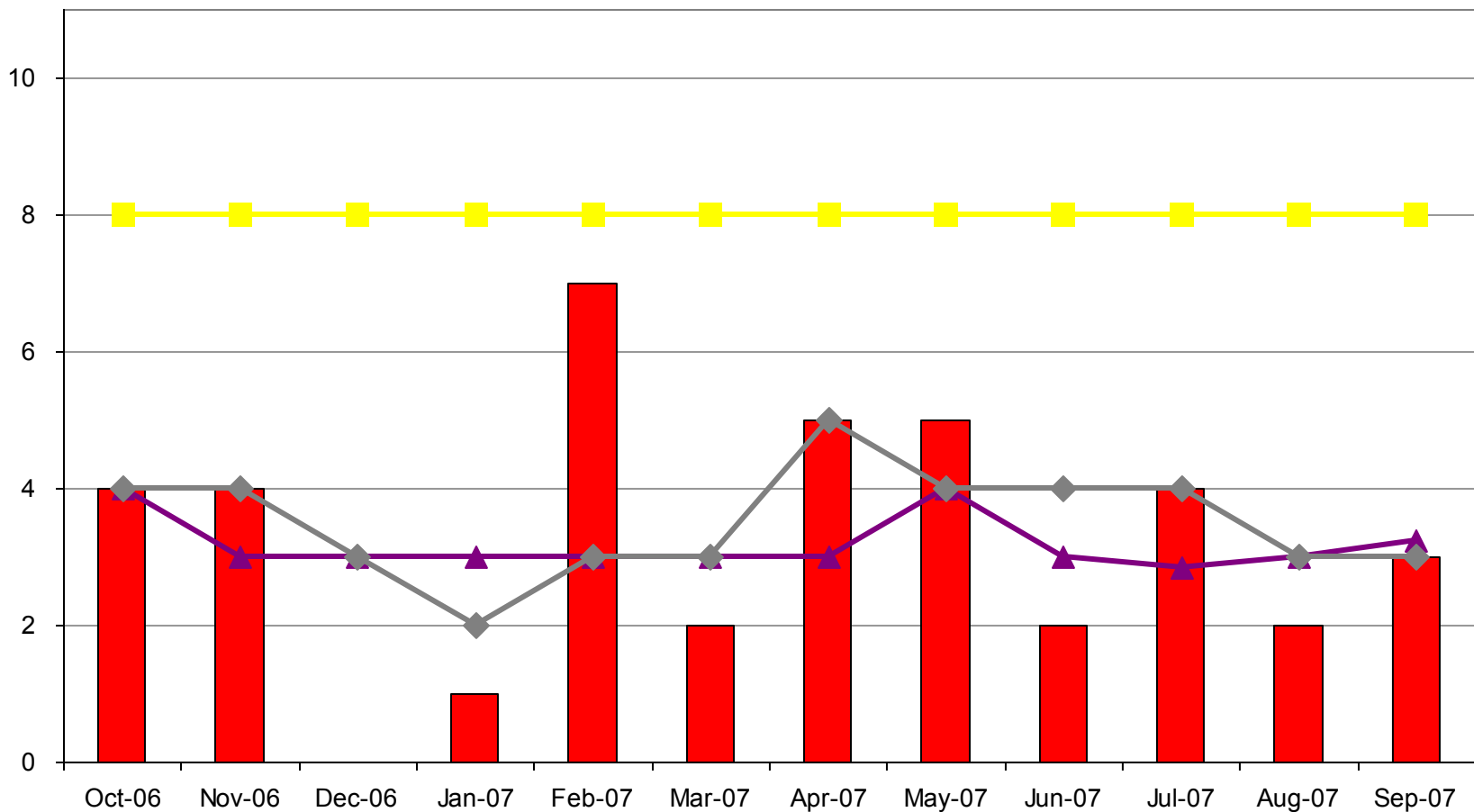
---

- **Define it**
  - What's the stretch goal?
- **Accomplish it**
- **Ask for help if needed**

# Evolution of SRS Security Metrics



## WSRC Security Inquiries/Reviews Through September 30, 2007



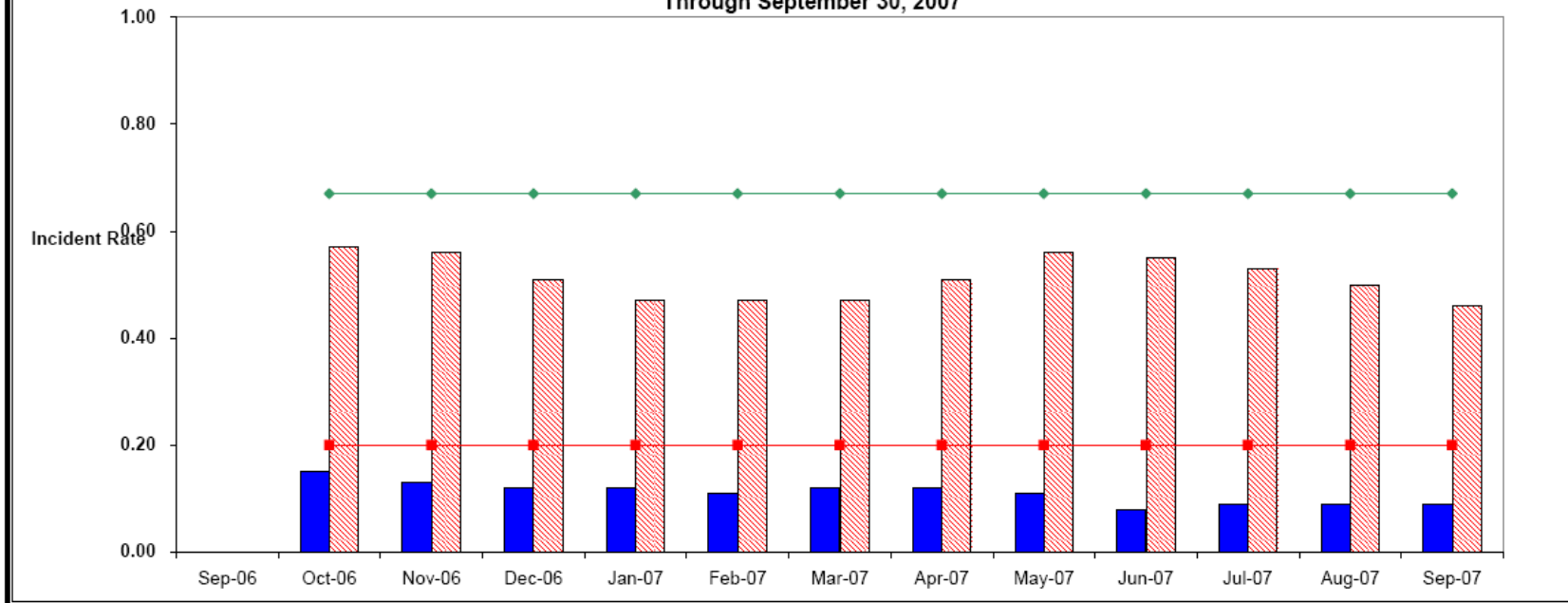
█ Inquiries Only

▲ 12MMA (Inq./Reviews)

■ AOP Goal (3MMA of 8 or less Inq./Reviews)

◆ 3MMA (Inq./Reviews)

## SAFETY AND SECURITY Safeguards and Security Incidents Through September 30, 2007



Data	Oct-06	Nov-06	Dec-06	Jan-07	Feb-07	Mar-07	Apr-07	May-07	Jun-07	Jul-07	Aug-07	Sep-07
1/8 Hour Reportable 12MMA	0.15	0.13	0.12	0.12	0.11	0.12	0.12	0.11	0.08	0.09	0.09	0.09
Goal	0.20	0.20	0.20	0.20	0.20	0.20	0.20	0.20	0.20	0.20	0.20	0.20
Score	Blue	Blue	Blue	Blue	Blue	Blue	Blue	Blue	Blue	Blue	Blue	Blue
Total Reportable 12 MMA	0.57	0.56	0.51	0.47	0.47	0.47	0.51	0.56	0.55	0.53	0.50	0.46
Goal	0.67	0.67	0.67	0.67	0.67	0.67	0.67	0.67	0.67	0.67	0.67	0.67
Score	Blue	Blue	Blue	Blue	Blue	Blue	Blue	Blue	Blue	Blue	Blue	Blue

**Definition**  
 The incidence rate for this metric is calculated in the same manner as the site's safety incidence rate. It is obtained by multiplying the number of reportable incidents (Ref: 7Q-213) by 200,000 and dividing by the total number of work hours. Per 7Q-213, Category 1 incidents are reportable to DOE-HQ within 1 hour, Cat. 2 and 3 within 8 hours, and Cat. 4 within 30 days. The 1/8 hour Reportable Rate includes incident Cat. 1-3. The Total Reportable Rate includes Cat. 1-4. (Impact Measurement Index - IMI)

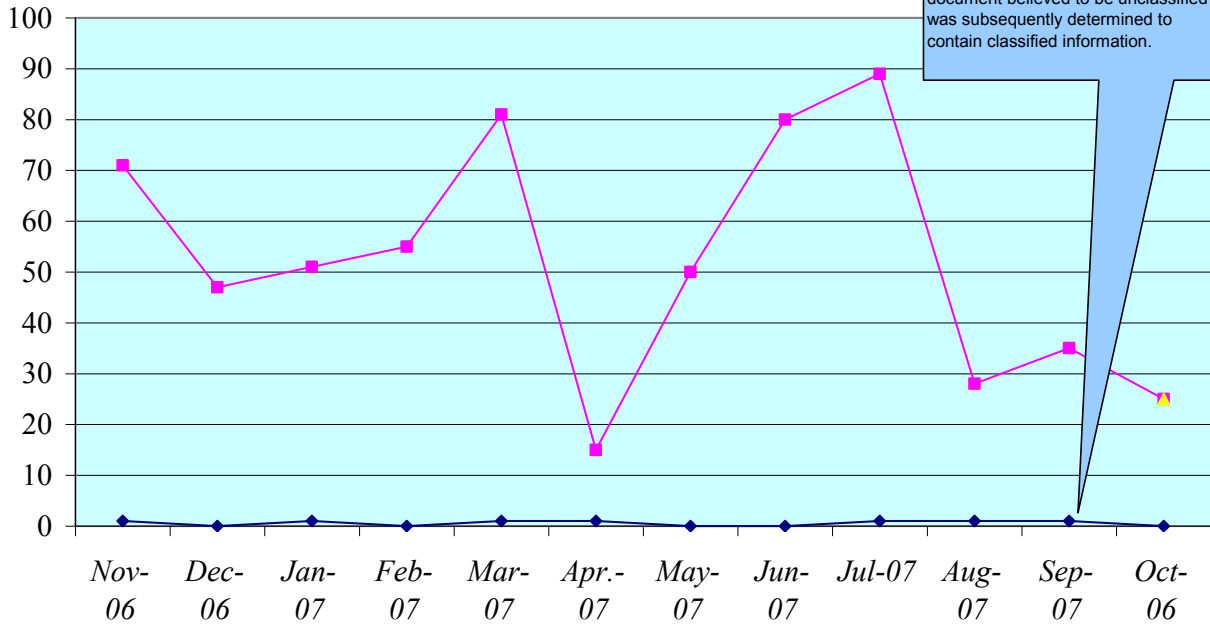
**1/8 Hr - BLUE Total Reportable - BLUE**  
**Analysis:** Three incidents were recorded in September, as follows: SRNL had one IMI-2 (Type 6 - Classified Information, a document believed to be unclassified was subsequently determined to contain classified information). Two IMI-4s were recorded in A-Area [1 - Type 12 Foreign National, during the conduct of a Self Assessment it was determined that a Foreign National assigned to SRS had entered the an SRS limited area without prior written notification to and approval of the WSRC Foreign Visit and Assignment Office. This event has been determined by the DOE-SR Foreign Visit/Assignment SME to have occurred because of process issues rather than failure of the escort/Assignee to comply with the security plan; and 1- Type 17 Other- Improper Escort, a WSI Security Police Officer found a door allowing entry into a Limited Area that was unsecured (propped open)]. **Action:** A security reminder will be sent to all employees during October 2007, reminding them of their escorting requirements.

**Goal**  
 1/8 Hour: .20 Total Reportable: .67  
 Blue >5% below the goal  
 Green 4% below the goal to 5% above the goal  
 Yellow 6% to 25% above the goal  
 Red >25% above the goal

**Comments:**

WSRC KPI Owner: Geoff Reynolds (803-725-0869) WSRC SME: Lynda Blystone (803-725-2373) DOE KPI Owner: Ron Bartholomew (803-725-5905)

◆ Number of Incidents  
 ■ Average Days between Incidents  
 ▲ Current days between Events as of October 7, 2007



On 9/12/2007, the WSRC Classification Officer advised that a document believed to be unclassified was subsequently determined to contain classified information.

	Nov-06	Dec-06	Jan-07	Feb-07	Mar-07	Apr-07	May-07	Jun-07	Jul-07	Aug-07	Sep-07	Oct-06
<b>Number of Incidents</b>	1	0	1	0	1	1	0	0	1	1	1	0
<b>Average Days between Incidents</b>	71	47	51	55	81	15	50	80	89	28	35	25
<b>Current days between Events as of October 7, 2007</b>												25

**September-07**

On 9/12/2007, the WSRC Classification Officer advised that a document believed to be unclassified was subsequently determined to contain classified information. (IMI-2)

**October-07**

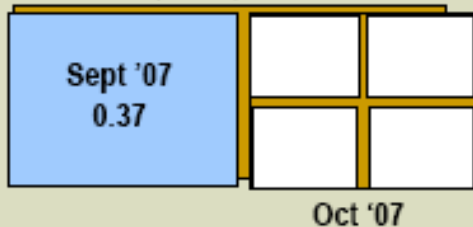
w/e 10/7	w/e 10/14
w/e 10/21	w/e 10/28

# FY08 POMC Weekly Status

Performance  Objectives  Measures  Commitments

## TRC Rate

Goal: 0.55 (FYTD)



## DART Rate

Goal: 0.19 (FYTD)



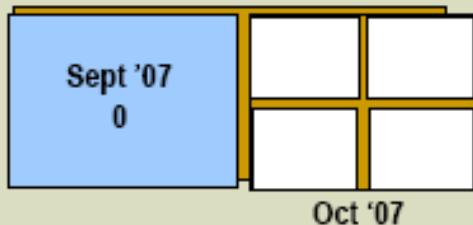
## Contamination Events

Monthly Goal: 0.75



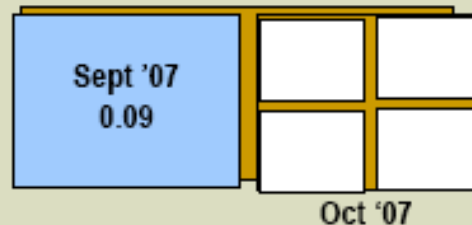
## Env. Compliance Index

Monthly Goal: 1.0



## S&S Incidents (1/8 Hour)

Goal: 0.20 (12 MMA)



## ORPS EM Weighted Index

Monthly Goal: 2.8

